



# CIVIC AUDITORIUM

---

17 JANUARY 2020



CIVIC AUDITORIUM

TABLE OF CONTENTS	02
ACKNOWLEDGEMENTS	03
APPLICABLE BUILDING CODES	04
VICINITY PLAN	05
FINISHES NARRATIVE	06
LOWER LEVEL FLOOR PLAN	07
LEVEL ONE FLOOR PLAN	08
BALCONY LEVEL FLOOR PLAN	09
EAST ELEVATION	10
WEST ELEVATION	11
SOUTH ELEVATION	12
NORTH ELEVATION	13



**OWNER:**

City of East Point  
2757 East Point Street  
East Point, Georgia 30344  
Contact: Deron King  
404.270.4358

**BUILDER:**

Winter Johnson Group  
5616 Peachtree Road  
Chamblee, Georgia 30341  
Contact: Lovett Gaither  
470.421.0366

**ARCHITECTURE:**

Moody Nolan  
1201 West Peachtree Street  
Suite 750  
Atlanta, Georgia 30309  
Contact: Desmond Johnson  
470.480.7590

**CIVIL:**

TY Lin  
260 Peachtree Street NE  
Suite 900  
Atlanta, Georgia 30303  
Contact: Stacy Blakley  
678.235.3622

**STRUCTURAL:**

Sykes Consulting, Inc.  
1175 Peachtree Street NE  
100 Colony Square  
Suite 2300  
Contact: Darien Sykes  
404.249.1538

**MEP / FP:**

TLC Engineering Solutions  
1372 Peachtree Street NE  
Atlanta, Georgia 30309  
Contact: Cole Parkinson  
678.431.2581



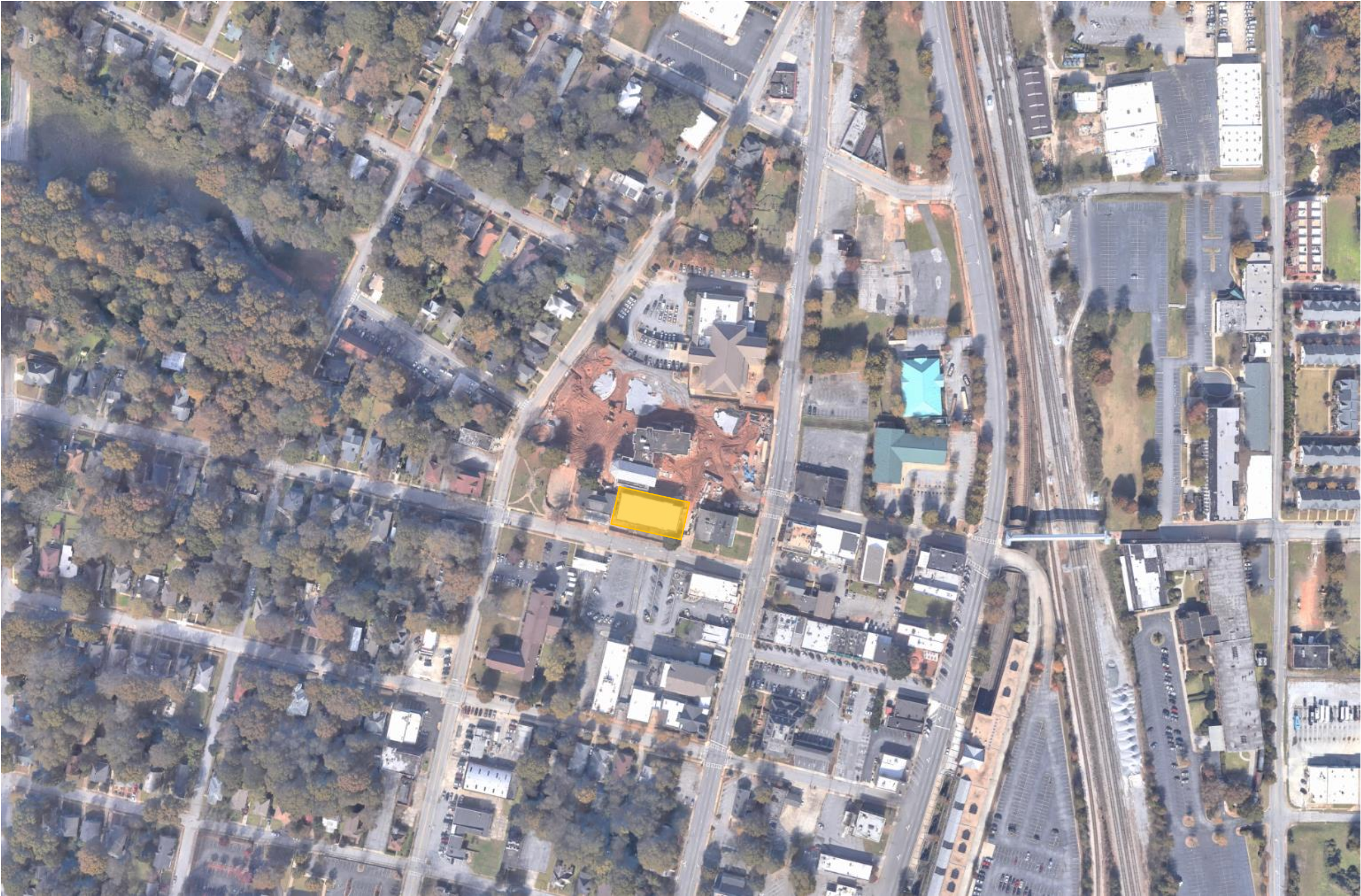
**Current Mandatory Codes as Adopted by DCA:**

- International Building Code, 2018 Edition, with Georgia Amendments (2020)
  - International Fire Code, 2018 Edition (No Georgia Amendments)
- International Plumbing Code, 2018 Edition, with Georgia Amendments (2020)
- International Mechanical Code, 2018 Edition, with Georgia Amendments (2020)
  - International Fuel Gas Code, 2018 Edition, with Georgia Amendments (2020)
  - National Electrical Code, 2017 Edition (No Georgia Amendments)
- International Energy Conservation Code, 2015 Edition, with Georgia Supplements and Amendments (2020)

**Current Permissive Codes as Adopted by DCA:**

- Disaster Resilient Building Code IBC Appendix(2013)
- Disaster Resilient Building Code IRC Appendix (2013)
- International Property Maintenance Code, 2012 Edition, with Georgia Amendments (2015)
  - International Existing Building Code, 2012 Edition, with Georgia Amendments (2015)
  - National Green Building Standard, 2008 Edition, with Georgia Amendments (2011)







LOWER LEVEL EXISTING:

THE BASEMENT AREA BELOW THE EXISTING STAGE WILL BE FINISHED, IN GENERAL, WITH PAINTED GYPSUM BOARD ON METAL FURRING. THERE WILL BE OPPORTUNITIES TO HAVE EXPOSED BRICK IN SOME LOCATIONS, IF PRACTICAL.

- FLOORS:
- o SEALED CONCRETE IN MULTIPUPROSE ROOM
  - o CARPET IN GREEN ROOM AND DRESSING ROOMS
  - o TILE IN RESTROOMS AND KITCHENETTE
  - o VCT IN CORRIDOR

- CEILINGS:
- o EXPOSED STRUCTURE IN CORRIDOR AND MULTIPURPOSE ROOM
  - o SUSPENDED ACOUSTIC TILE IN GREEN ROOM AND DRESSING ROOMS
  - o GYPSUM BOARD IN RESTROOMS AND KITCHENETTE

- LOWER LEVEL ADDITION:
- o CONCRETE FLOOR, EXPOSED CMU ON NEW WALLS, AND EXPOSED BRICK ON EXISTING REAR WALL OF BUILDING
  - o EXPOSED STRUCTURE AT CEILING

LEVEL ONE

- EXISTING LOBBY:
- o PAINT EXISTING PLASTER WALLS AND CEILINGS
  - o PAINT EXISTING AND NEW WOODWORK
  - o NEW TERRAZZO TILE ON FLOOR
  - o PAINT EXISTING STAIR RAILINGS
  - o ADD NEW TERRAZZO TILE TO STAIR TREADS

- PREFUNCTION SPACE:
- o PAINT ON NEW GYPSUM BOARD WALLS
  - o PAINT ON NEW WOODWORK
  - o PAINT ON EXISTING PLASTER CEILING
  - o CARPET ON FLOOR

- RESTROOMS:
- o TILE ON FLOORS
  - o TILE ON WET WALL AND HALF OF REMAINING WALLS
  - o PAINT ON GYPSUM BOARD WALLS AND CEILINGS

- CONNECTOR:
- o TILE ON FLOORS
  - o PAINT ON NEW GYPSUM BOARD WALLS (EAST, WEST, AND NORTH SIDES)
  - o EXPOSED EXISTING BRICK ON SOUTH SIDE
  - o REPAIR AND PAINT EXISTING WOODWORK SURROUNDING EXISTING DOOR ON SOUTH WALL
  - o PAINTED GYPSUM BOARD CEILING

- STAGE:
- o PAINT EXISTING MASONRY WALLS
  - o PAINTED PLYWOOD FLOOR ON NEW BASE
  - o EXPOSED STRUCTURE CEILING

- BACKSTAGE:
- o CONCRETE FLOOR
  - o EXPOSED CMU WALLS – UNPAINTED

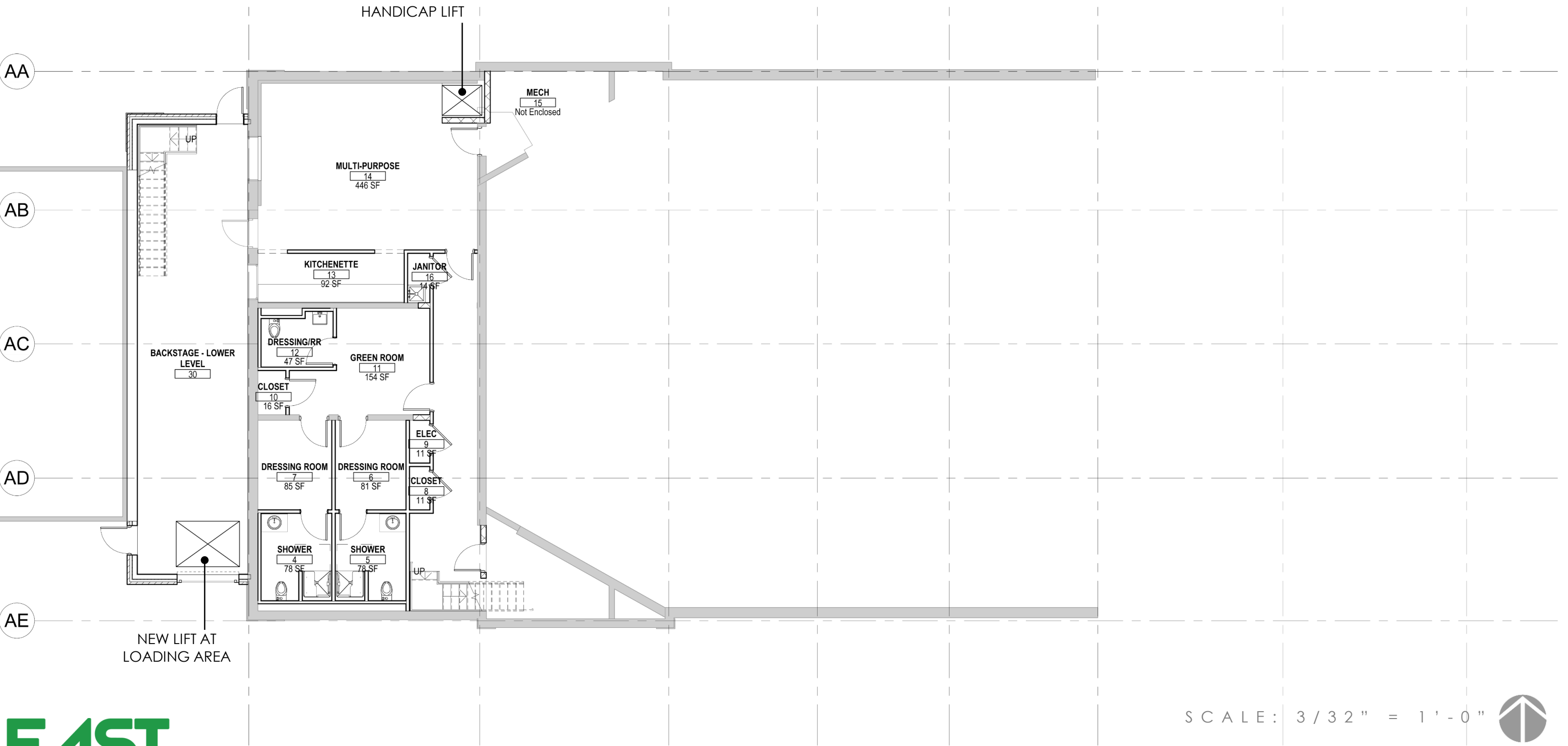
- AUDITORIUM:
- o PAINT EXISTING MASONRY WALLS
  - o PAINT NEW GYPSUM BOARD WALLS
  - o CARPET ON AISLE FLOORS
  - o SEALED CONCRETE BELOW SEATING
  - o ALLOW FOR ACOUSTIC TRETMENT ON WALLS (TBD)
  - o PAINTED GYPSUM BOARD CEILING WITH HEAVY CROWN MOLDING (TBD) AND ACOUSTIC TREATMENTS (TBD)

UPPER LEVEL

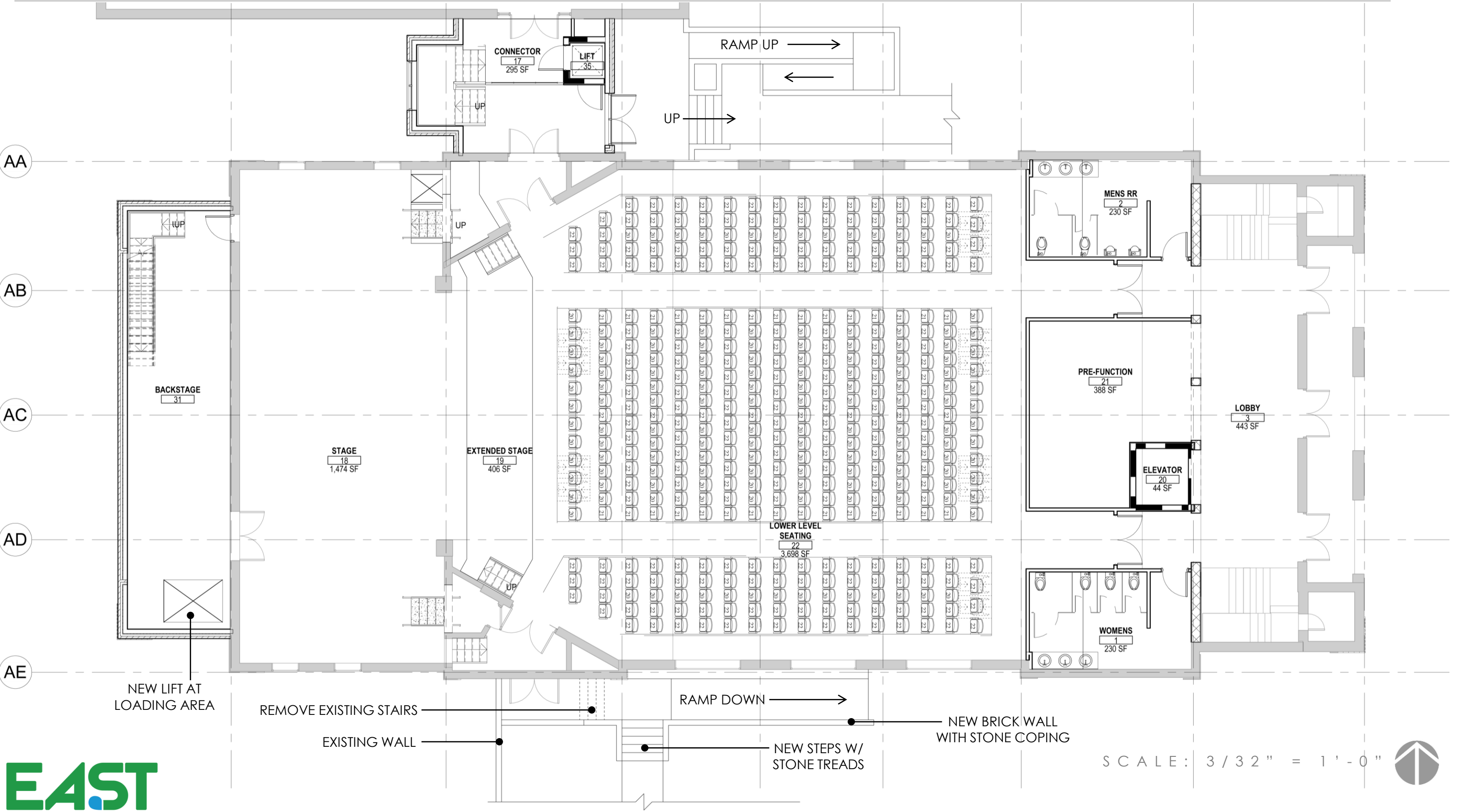
- o PAINT ON NEW GYPSUM BOARD WALLS AT CONFERENCE ROOM AND CONTROL BOOTH
- o CARPET ON FLOOR OF CONFERENCE ROOM
- o SEALED CONCRETE ON FLOOR OF CONTROL BOOTH
- o CARPET ON AISLES
- o SEALED CONCRETE BELOW SEATING
- o SUSPENDED ACOUSTIC TILE ON CEILINGS OF CONFERENCE ROOM AND CONTROL BOOTH

RENOVATION: +/- 10,400 GSF  
ADDITION: +/- 2,100 GSF

LOWER LEVEL FLOOR PLAN



# LEVEL ONE FLOOR PLAN





BALCONY LEVEL FLOOR PLAN

AA

AB

AC

AD

AE

MECHANICAL  
32

LIGHTING CONTROL  
23

CONFERENCE ROOM  
28

ELEVATOR  
24

SPOTLIGHT  
25

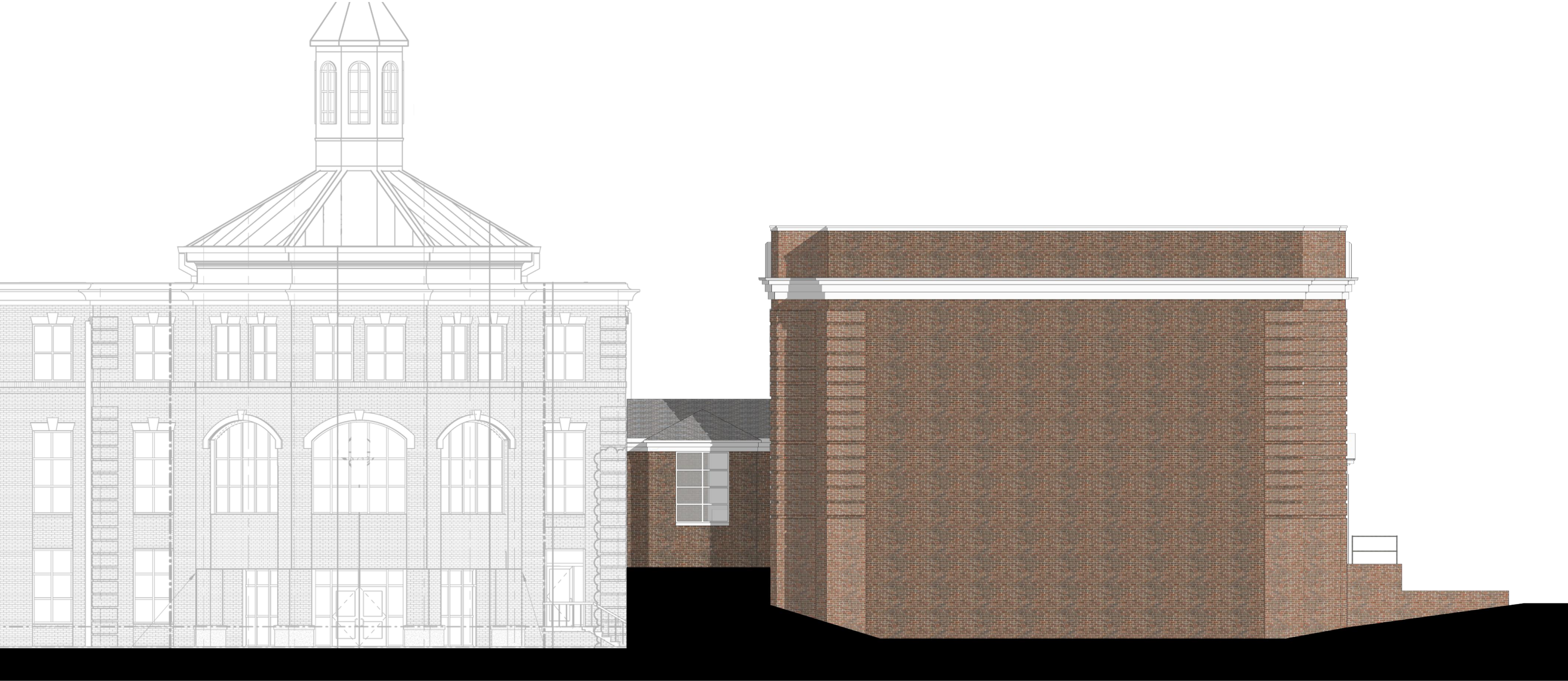
UP

SCALE: 3 / 32 " = 1 ' - 0 "



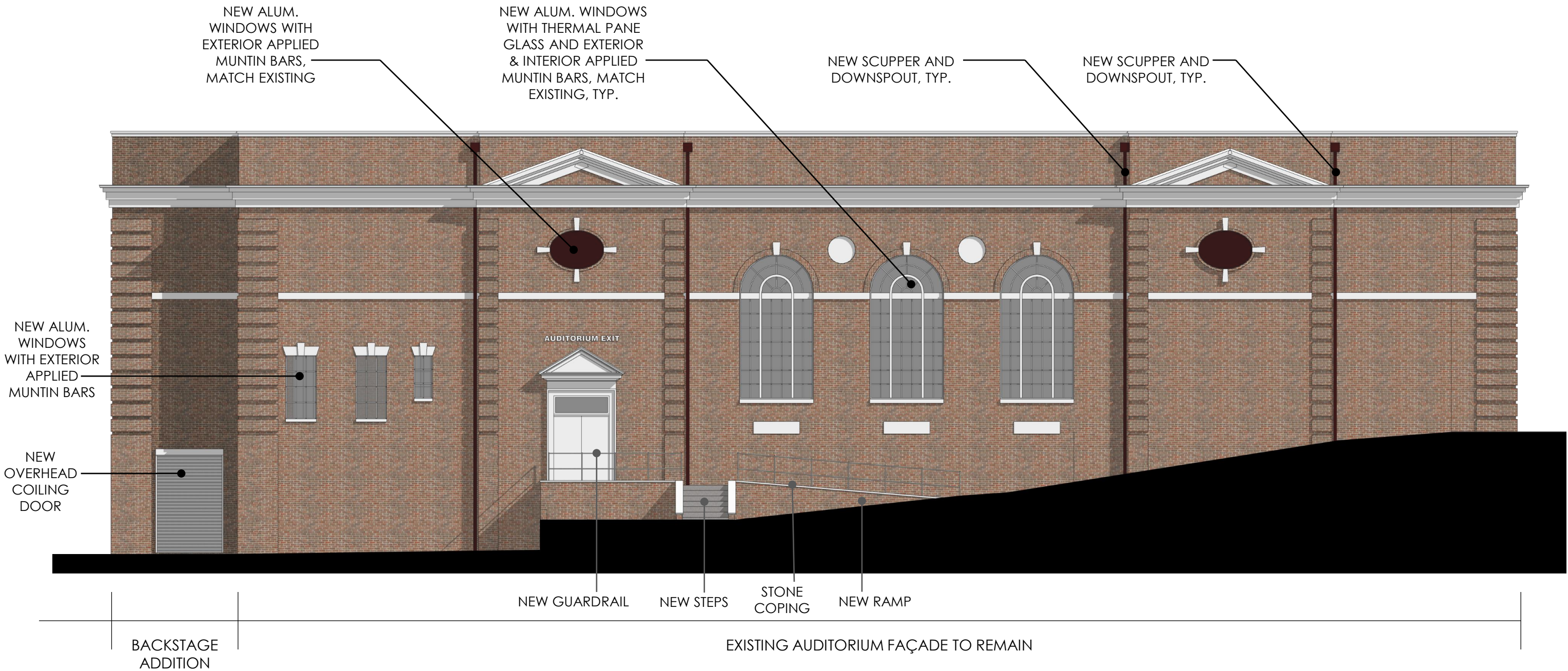






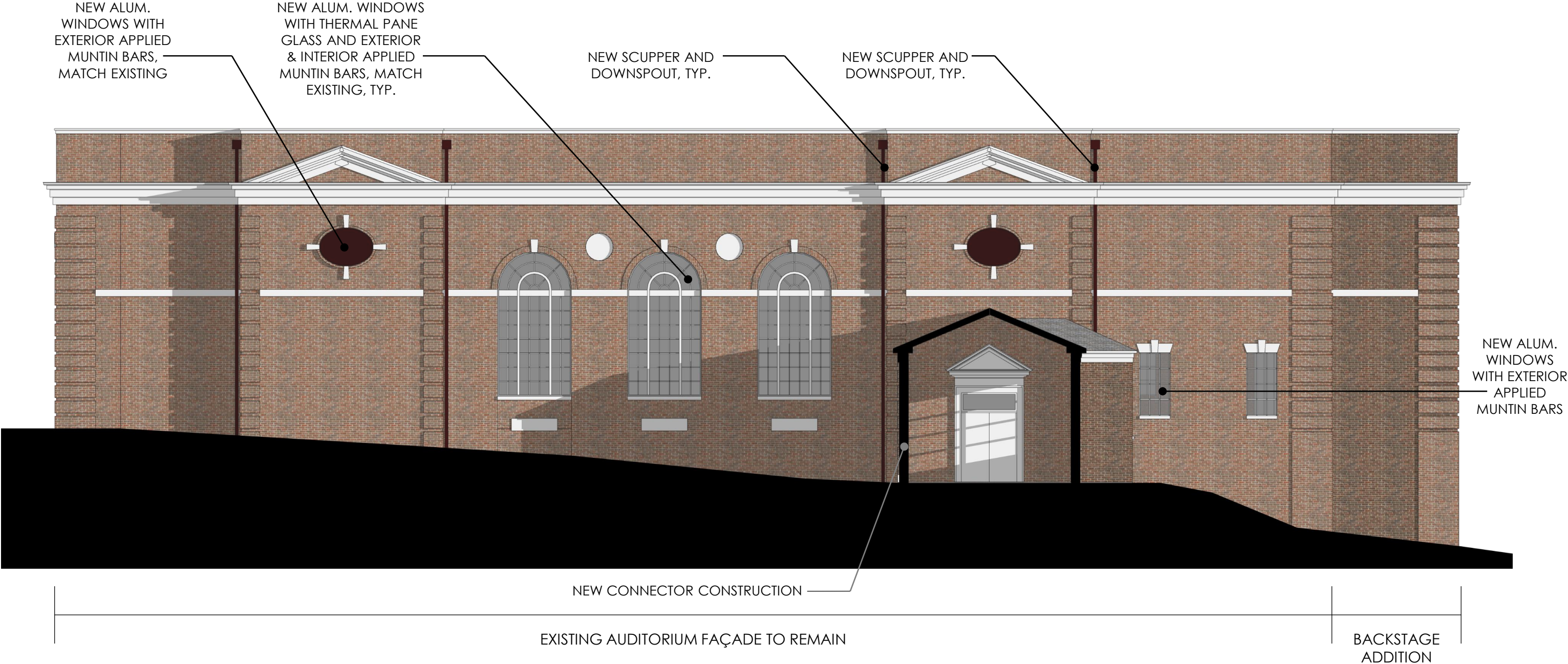
← CITY HALL BUILDING NEW CONNECTOR REAR AUDITORIUM FAÇADE WITH BACKSTAGE ADDITION





NOT TO SCALE





NOT TO SCALE