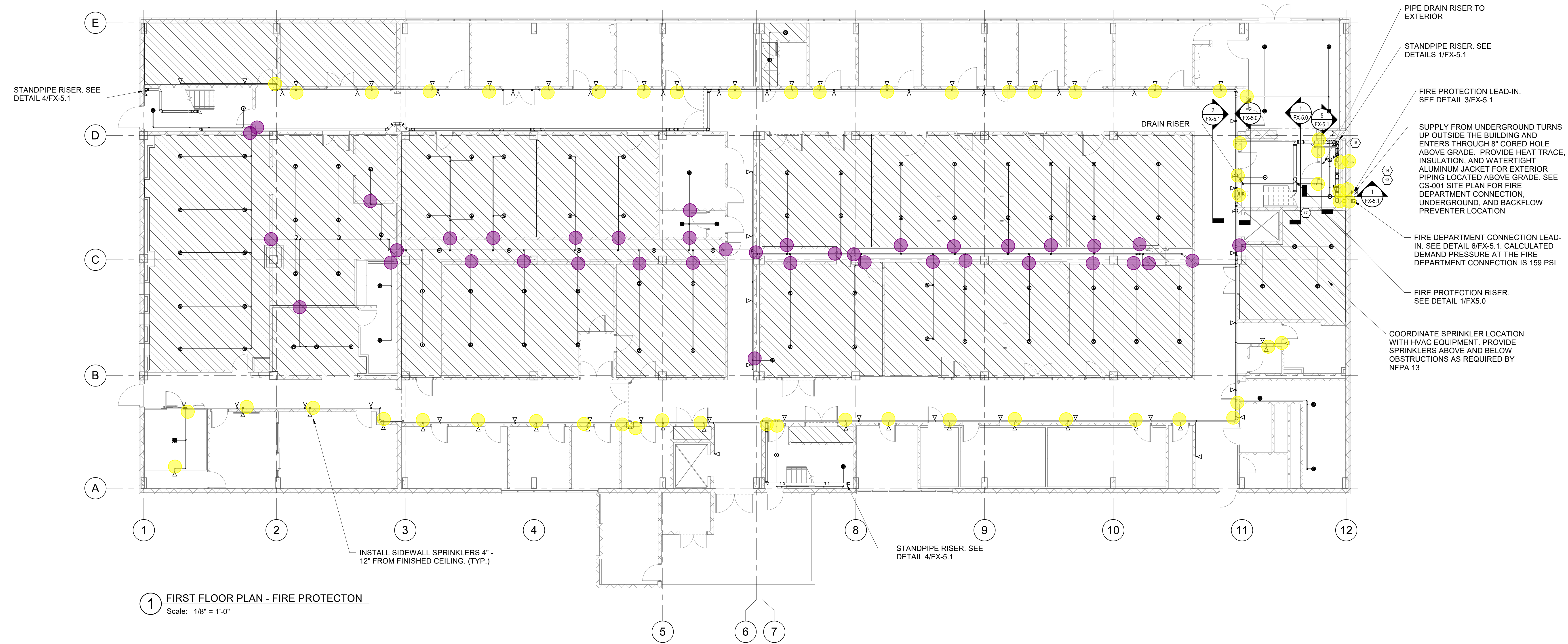


FIRE PROTECTION NOTES
 1. SEE SHEET FX-5.0 AND FX-5.1 FOR FIRE PROTECTION NOTES AND DETAILS.

FIRE PROTECTION LEGEND

●	QUICK-RESPONSE PENDENT SPRINKLER, K-5.6
⊙	QUICK-RESPONSE PENDENT SPRINKLER, K-8.0
○	QUICK-RESPONSE UPRIGHT SPRINKLER, K-5.6
⊗	QUICK-RESPONSE UPRIGHT SPRINKLER, K-8.0
▽	QUICK-RESPONSE HORIZONTAL SIDEWALL SPRINKLER, K-5.6
⊛	QUICK-RESPONSE DRY PENDENT SPRINKLER, K-5.6
□	LIGHT HAZARD 0.10 GPM/SF OVER HYDRAULICALLY MOST REMOTE 1,500 SF
▨	ORDINARY HAZARD - GROUP 1 0.15 GPM/SF OVER HYDRAULICALLY MOST REMOTE 1,500 SF

- KEY**
- = CORE WALL PENETRATION
 - = PERIMETER WALL PENETRATION
 - = FLOOR PENETRATION



1 FIRST FLOOR PLAN - FIRE PROTECTON
 Scale: 1/8" = 1'-0"

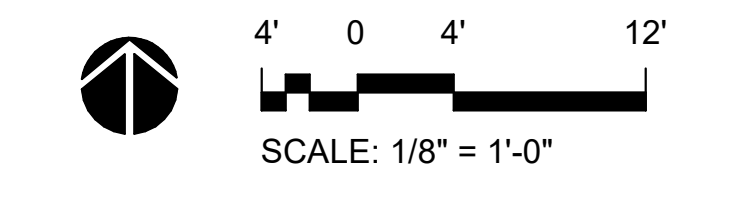
**Cherry Emerson Building (066)
 Fire Sprinkler System Addition**
 The Georgia Institute of Technology
 310 Ferst Dr NW,
 Atlanta, GA 30332

ISSUED FOR PERMITTING AND CONSTRUCTION

comm.	dat.
N/A	11-09-2020
drawn	checked
JHS	KAP
sheet	

FIRST FLOOR PLAN - FIRE PROTECTION

Attachment 3
 GT - Cherry Emerson - Penetrations
 Dated 1/14/21



FX-1.0

FIRE PROTECTION NOTES
 1. SEE SHEET FX-5.0 AND FX-5.1 FOR FIRE PROTECTION NOTES AND DETAILS.

FIRE PROTECTION LEGEND

●	QUICK-RESPONSE PENDENT SPRINKLER, K-5.6
⊙	QUICK-RESPONSE PENDENT SPRINKLER, K-8.0
○	QUICK-RESPONSE UPRIGHT SPRINKLER, K-5.6
⊙	QUICK-RESPONSE UPRIGHT SPRINKLER, K-8.0
▽	QUICK-RESPONSE HORIZONTAL SIDEWALL SPRINKLER, K-5.6
⊙	QUICK-RESPONSE DRY PENDENT SPRINKLER, K-5.6
□	LIGHT HAZARD 0.10 GPM/SF OVER HYDRAULICALLY MOST REMOTE 1,500 SF
▨	ORDINARY HAZARD - GROUP 1 0.15 GPM/SF OVER HYDRAULICALLY MOST REMOTE 1,500 SF

revision	description
1	ISSUED FOR PERMITTING AND CONSTRUCTION

**Cherry Emerson Building (066)
 Fire Sprinkler System Addition
 The Georgia Institute of Technology
 310 Ferst Dr NW,
 Atlanta, GA 30332**

ISSUED FOR PERMITTING AND CONSTRUCTION

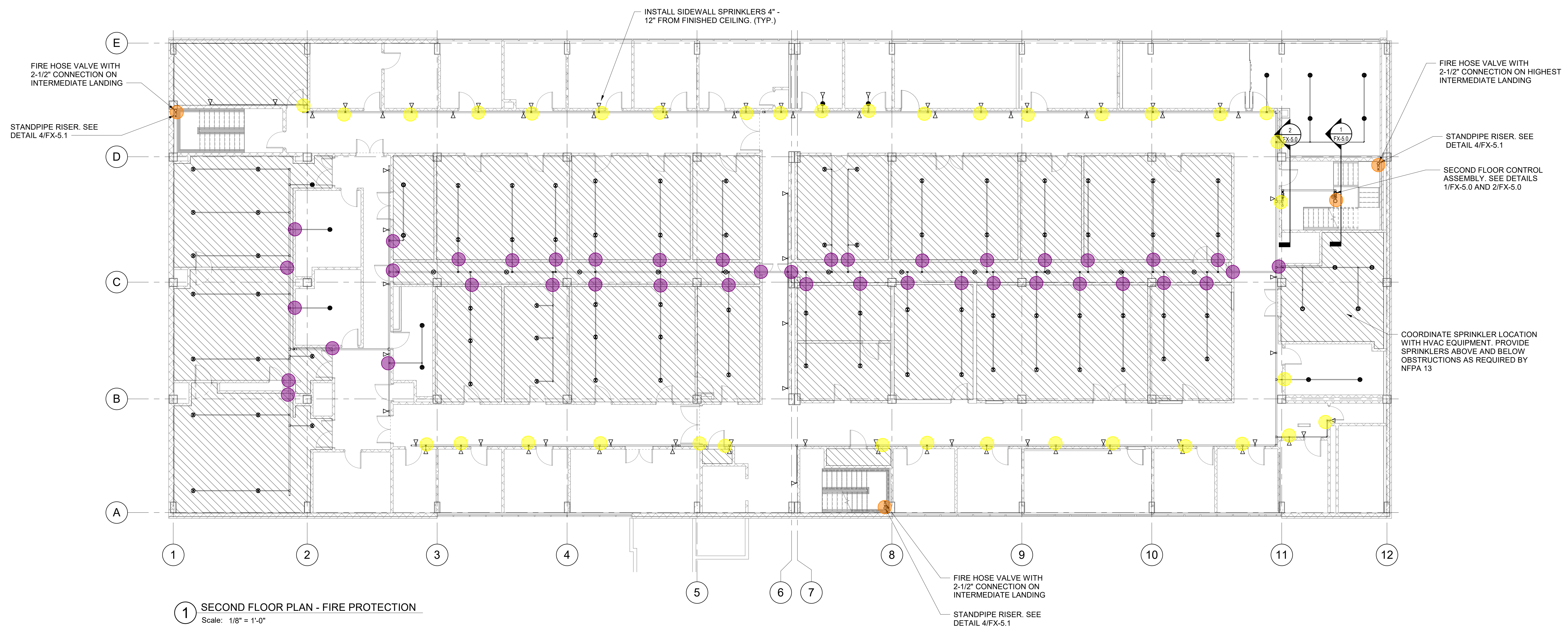
comm.	dat.
N/A	11-09-2020
drawn	checked
JHS	KAP
sheet	

SECOND FLOOR PLAN - FIRE PROTECTION

FX-1.1

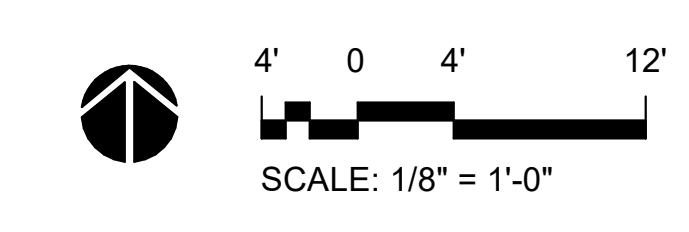
KEY

- = CORE WALL PENETRATION
- = PERIMETER WALL PENETRATION
- = FLOOR PENETRATION



1 SECOND FLOOR PLAN - FIRE PROTECTION
 Scale: 1/8" = 1'-0"

**Attachment 3
 GT - Cherry Emerson - Penetrations
 Dated 1/14/21**



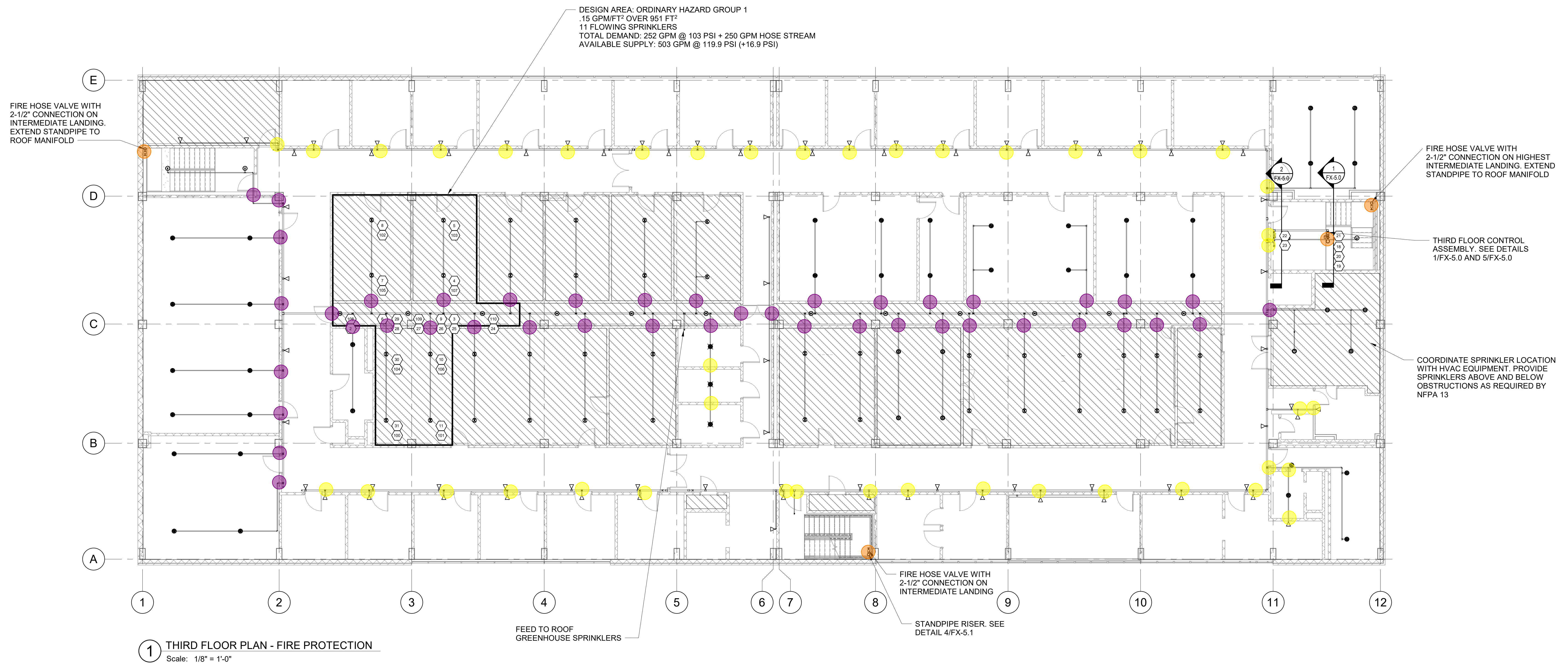
FIRE PROTECTION NOTES
1. SEE SHEET FX-5.0 AND FX-5.1 FOR FIRE PROTECTION NOTES AND DETAILS.

FIRE PROTECTION LEGEND

- QUICK-RESPONSE PENDENT SPRINKLER, K-5.6
- QUICK-RESPONSE PENDENT SPRINKLER, K-8.0
- QUICK-RESPONSE UPRIGHT SPRINKLER, K-5.6
- QUICK-RESPONSE UPRIGHT SPRINKLER, K-8.0
- ▽ QUICK-RESPONSE HORIZONTAL SIDEWALL SPRINKLER, K-5.6
- ▽ QUICK-RESPONSE DRY PENDENT SPRINKLER, K-5.6
- LIGHT HAZARD 0.10 GPM/SF OVER HYDRAULICALLY MOST REMOTE 1,500 SF
- ▨ ORDINARY HAZARD - GROUP 1 0.15 GPM/SF OVER HYDRAULICALLY MOST REMOTE 1,500 SF

KEY

- = CORE WALL PENETRATION
- = PERIMETER WALL PENETRATION
- = FLOOR PENETRATION



**Cherry Emerson Building (066)
Fire Sprinkler System Addition**
The Georgia Institute of Technology
310 Ferst Dr NW,
Atlanta, GA 30332

ISSUED FOR PERMITTING AND CONSTRUCTION

comm.	dat.
N/A	11-09-2020
drawn	checked
JHS	KAP
sheet	

THIRD FLOOR PLAN - FIRE PROTECTION

Attachment 3
GT - Cherry Emerson - Penetrations
Dated 1/14/21



FX-1.2

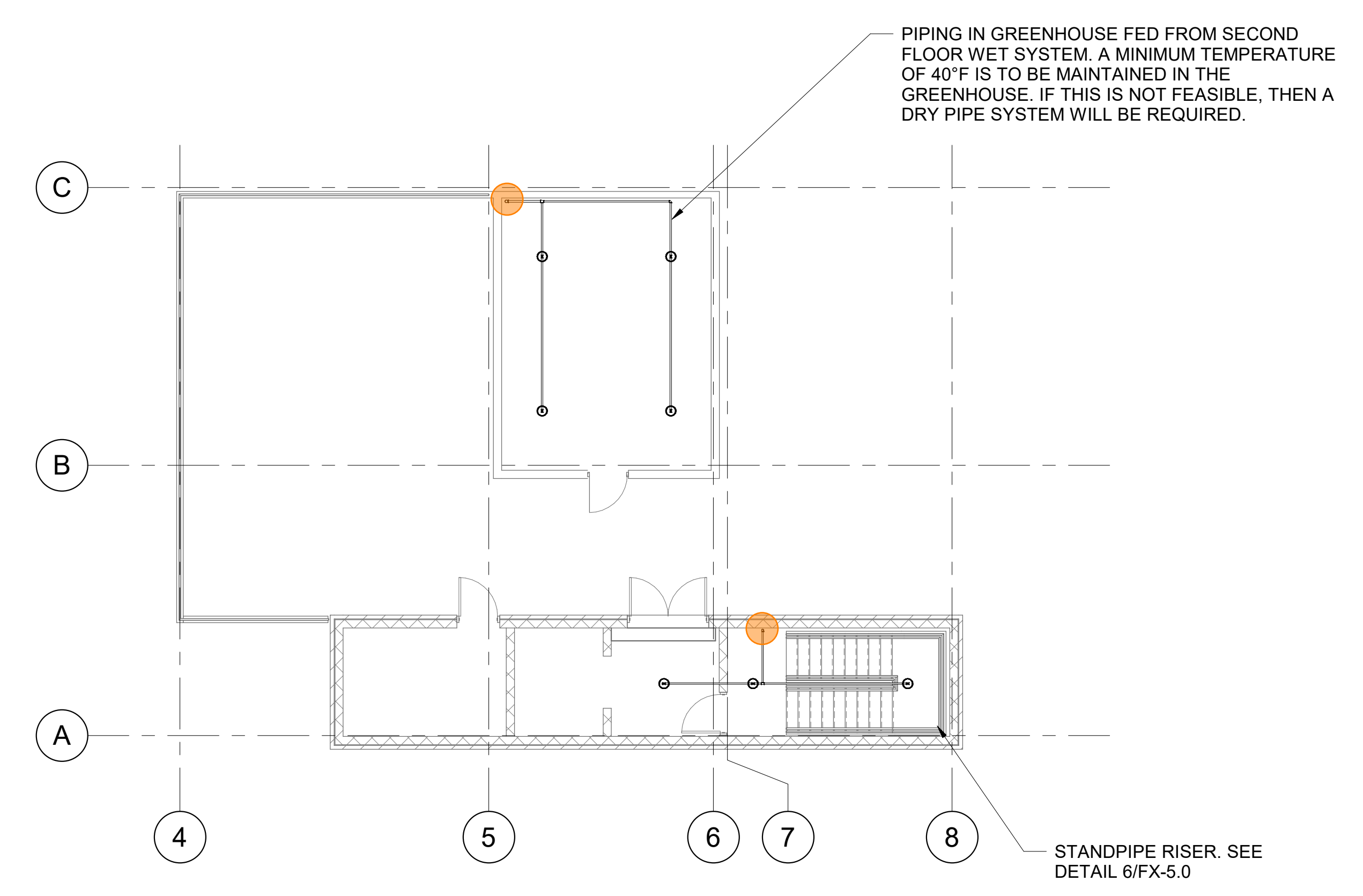
FIRE PROTECTION NOTES
1. SEE SHEET FX-5.0 AND FX-5.1 FOR FIRE PROTECTION NOTES AND DETAILS.

FIRE PROTECTION LEGEND

●	QUICK-RESPONSE PENDENT SPRINKLER, K-5.6
●	QUICK-RESPONSE PENDENT SPRINKLER, K-8.0
○	QUICK-RESPONSE UPRIGHT SPRINKLER, K-5.6
○	QUICK-RESPONSE UPRIGHT SPRINKLER, K-8.0
◁	QUICK-RESPONSE HORIZONTAL SIDEWALL SPRINKLER, K-5.6
◁	QUICK-RESPONSE DRY PENDENT SPRINKLER, K-5.6
□	LIGHT HAZARD 0.10 GPM/SF OVER HYDRAULICALLY MOST REMOTE 1,500 SF
▨	ORDINARY HAZARD - GROUP 1 0.15 GPM/SF OVER HYDRAULICALLY MOST REMOTE 1,500 SF

KEY

- = CORE WALL PENETRATION
- = PERIMETER WALL PENETRATION
- = FLOOR PENETRATION



① PENTHOUSES - FIRE PROTECTION
1/8" = 1'-0"

revision	no	description

**Cherry Emerson Building (066)
Fire Sprinkler System Addition**
The Georgia Institute of Technology
310 Ferst Dr NW,
Atlanta, GA 30332

ISSUED FOR PERMITTING AND CONSTRUCTION

comm.	dat.
N/A	11-09-2020
drawn	checked
JHS	KAP

PENTHOUSE - FIRE PROTECTION

FX-1.3

Attachment 3
GT - Cherry Emerson - Penetrations
Dated 1/14/21