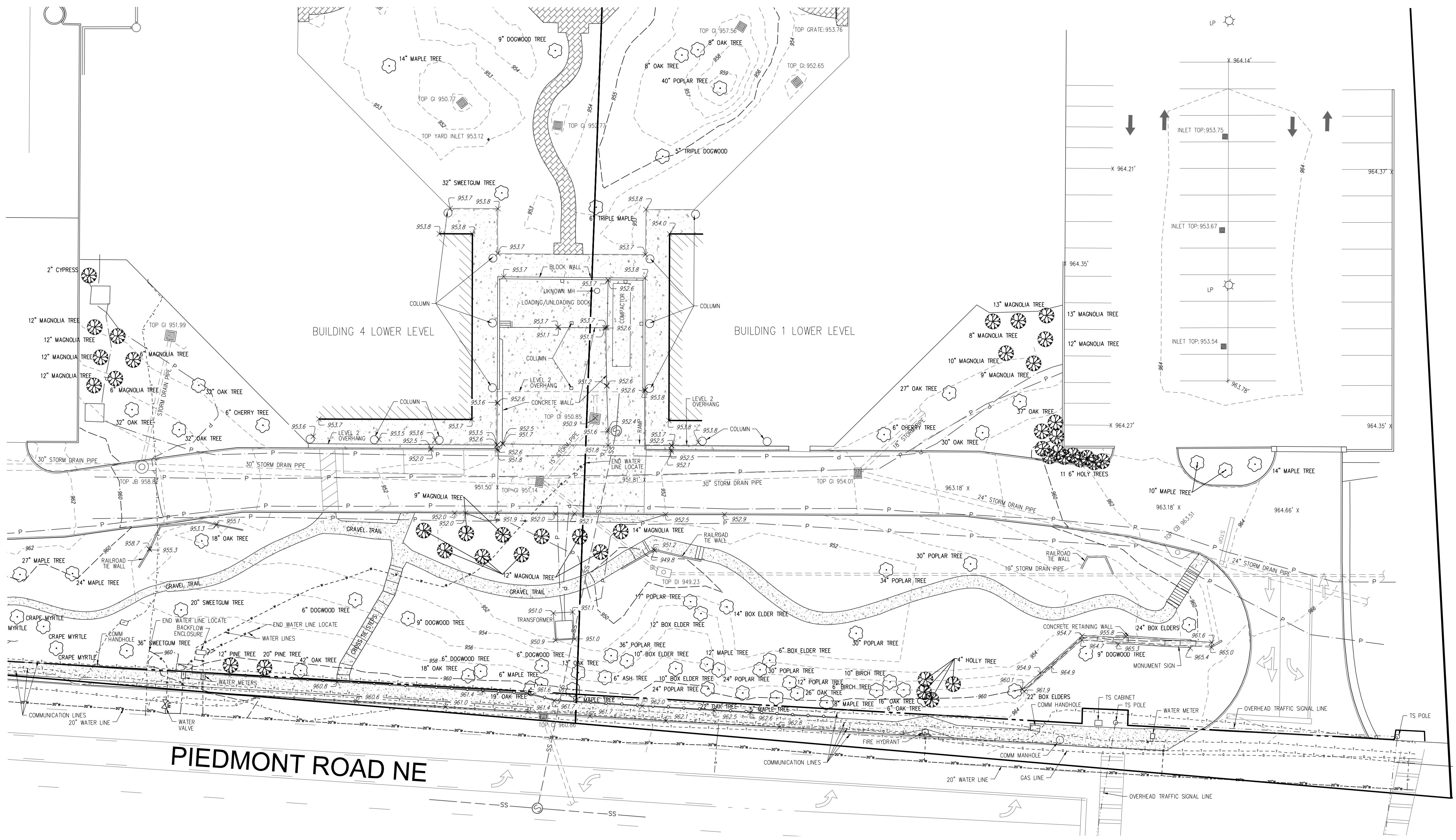
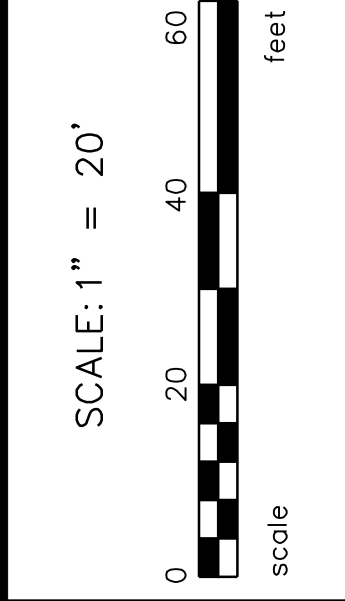


ABBREVIATIONS		LEGEND	
APPROX	= APPROXIMATE	HP	= HIGH POINT
BC	= BACK OF CURB	INV	= INVERT
BFE	= BOTTOM FLOOR ELEVATION	IPF	= IRON PIN FOUND
BM	= BENCHMARK	IRP	= IRON PIN SET - 1/2" REBAR
BW	= BOTTOM OF WALL	ICV	= IRRIGATION CONTROL VALVE
BLDG	= BUILDING	JB	= JUNCTION BOX
B/L	= BUILDING LINE	LB	= LAND LOT LINE
CB	= CATCH BASIN	LL	= LAND LOT LINE
C/L	= CENTERLINE	LP	= LIGHT POLE
CO	= CLEANOUT	MSL	= MEAN SEA LEVEL
CONC	= CONCRETE	OTIP	= OPEN TOP PIPE
CMF	= CONCRETE MONUMENT FOUND	OCS	= OUTLET CONTROL STRUCTURE
CMP	= CORRUGATED METAL PIPE	PVMT	= PAVEMENT
CSP	= CORRUGATED STEEL PIPE	PK	= PK NAIL FOUND
CF	= CUBIC FEET	PCP	= POLYVINYL CHLORIDE PIPE
C&G	= CURB & GUTTER	PFB	= POINT OF BEGINNING
CIF	= CRIMP TOP FOUND	PMR	= POWER
DIA	= DIAMETER	PP	= POWER POLE
DE	= DRAINAGE EASEMENT	P/TP	= POWER/TELEPHONE POLE
DI	= DROP INLET	P/L	= PROPERTY LINE
DIP	= DUCTILE IRON PIPE	PROP	= PROPOSED
DWCB	= DOUBLE WING CATCH BASIN	REB	= REBAR
EP	= EDGE OF PAVEMENT	RCP	= REINFORCED CONCRETE PIPE
ELEV	= ELEVATION	R/W	= RIGHT-OF-WAY
EX	= EXISTING	SSE	= SANITARY SEWER EASEMENT
FC	= FACE OF CURB	SSMH	= SANITARY SEWER MANHOLE
FT	= FEET	SW	= SIDEWALK
FFE	= FINISHED FLOOR ELEVATION	SF	= SQUARE FEET
FH	= FIRE HYDRANT	TEL	= TELEPHONE
FES	= FLARED END SECTION	TS	= TRAFFIC SIGNAL
FM	= FORCE MAIN	TB	= TOP OF BANK
GMH	= GEORGIA POWER MANHOLE	TC	= TOP OF CURB
G	= GRATE INLET	TPOB	= TRUE POINT OF BEGINNING
GR	= GROUND	TW	= TOP OF WALL
GW	= GUY WIRE	TRANS	= TRANSFORMER
HW	= HEADWALL	TS	= TRAFFIC SIGNAL
HDPE	= HIGH DENSITY POLYETHYLENE	UG	= UNDERGROUND



PREPARED FOR:  
**THE ARDENT COMPANIES**  
2100 POWERS FERRY ROAD SE  
SUITE 150  
ALBANY, GEORGIA 31709

DATE	REVISIONS
07/12/2021	DRAFT SURVEY FOR REVIEW
07/25/2021	SURVEY ISSUED

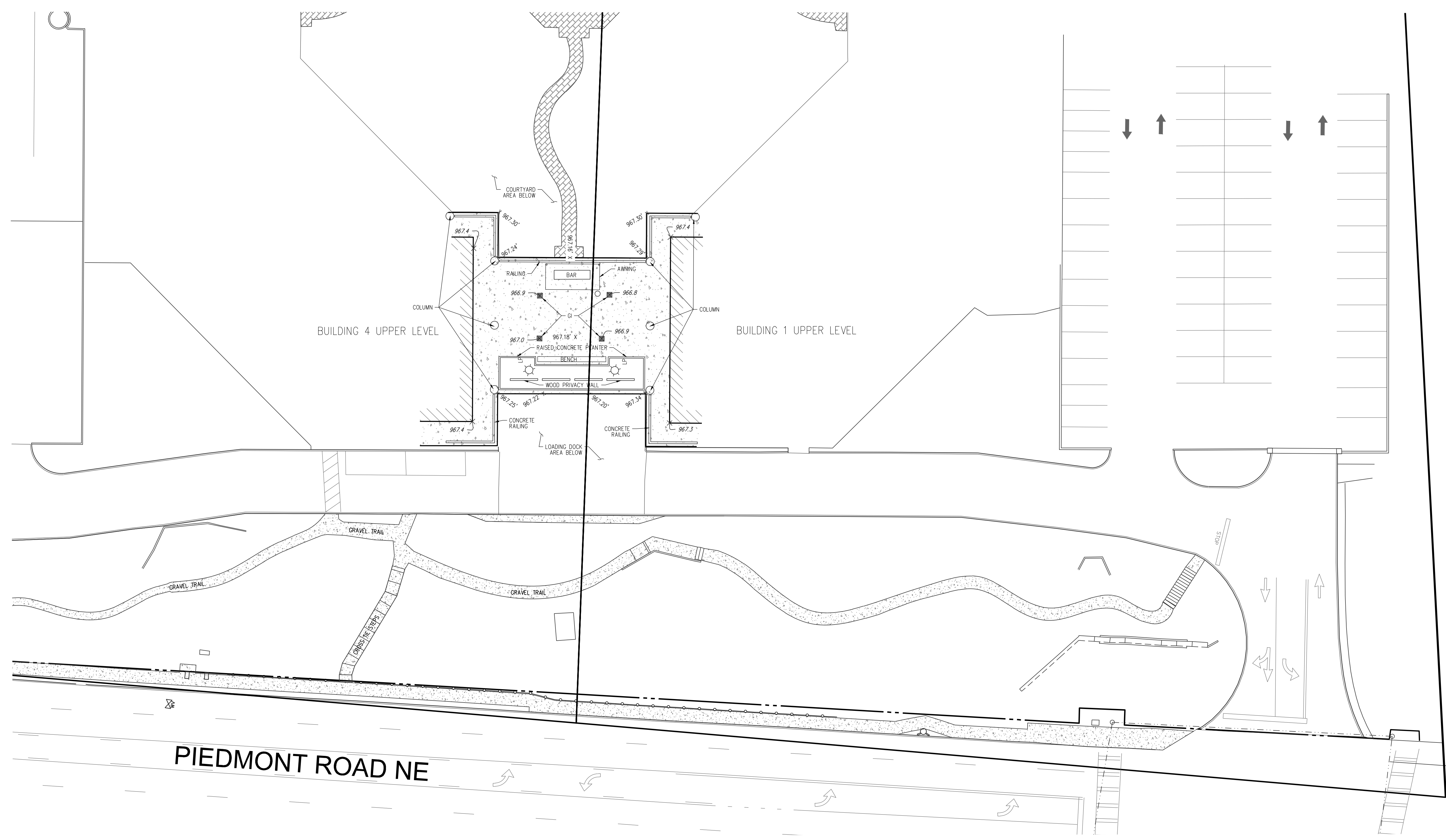
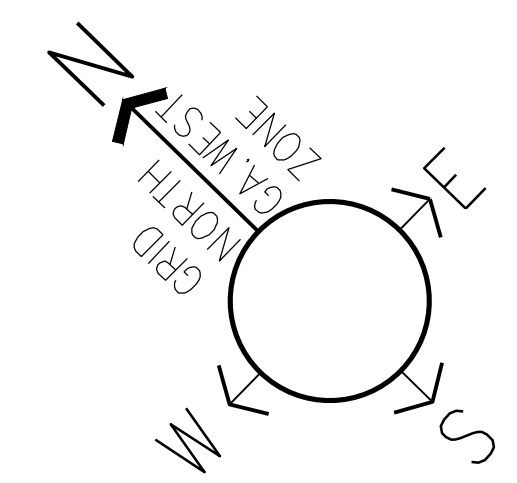
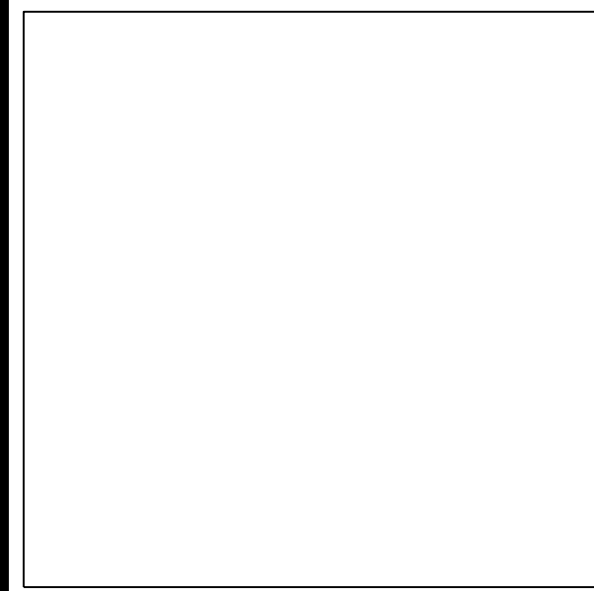


**PIEDMONT CENTER BUILDING 1-4**  
17TH LAND DISTRICT  
PARCELS 17 0088 LOTS 19, 17 0088 LOTS 20  
CITY OF ATLANTA  
DRAWN: KO  
CHECKED: MW

**TOPOGRAPHIC AND TREE SURVEY LOWER LEVEL**  
PROJECT # 2017.099  
SHEET 1 OF 2

V:\2017-099 - Piedmont Center\10000 - Survey\2017.099 TOPO and TREE SURVEY LOWER LEVEL.dwg, USER: j2/25/2021 4:24 PM by Matt Turdell

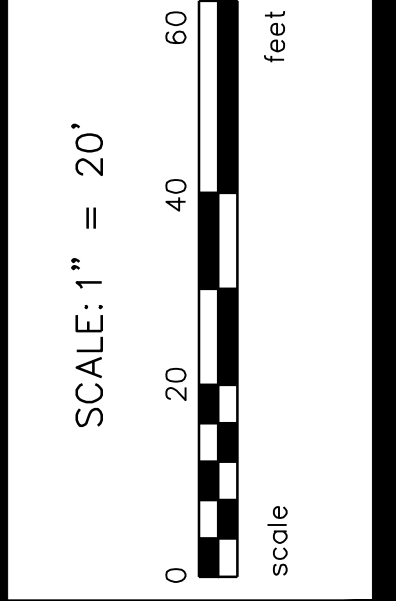





**BLUE LANDWORKS**  
 CONSULTING ENGINEERS & SURVEYORS  
 LICENSE # PE000518  
 LICENSE # LS001044  
 5019 WEST BROAD STREET  
 SUITE M230  
 SUGAR HILL, GEORGIA 30518  
 TELEPHONE: (678) 804-8586  
 INFO@BLUELANDWORKS.COM  
 WWW.BLUELANDWORKS.COM

PREPARED FOR:  
**THE ARDENT COMPANIES**  
 2100 POWERS FERRY ROAD SE  
 SUITE 350  
 ATLANTA, GEORGIA 30339

ISSUE #	DATE	REVISIONS
1	07/12/2021	DRAFT SURVEY FOR REVIEW
2	07/25/2021	DRAFT SURVEY ISSUED



**PIEDMONT CENTER BUILDING 1-4**

17TH LAND DISTRICT LAND LOT(S) 98  
 PARCELS 17 0088 LOTS 19, 17 0088 LOTS 20  
 CITY OF ATLANTA FULTON COUNTY, GA  
 DRAWN: KO CHECKED: TW

**TOPOGRAPHIC AND TREE SURVEY UPPER LEVEL**

PROJECT# 2017.099

**SHEET 2 OF 2**

V:\2017-099 - Piedmont Center\1000 - AutoCAD\3D - Survey\3D\17099 FROM BRIDGE TO POND UPPER 2/25/2021 4:25 PM by Matt Turf