

PIEDMONT
CENTER
AMENITY
BRIDGE

ATLANTA, GA 30305

This drawing is the property of Associated Space Design, Inc. and is not to be reproduced or copied in whole or part. It is not to be used on any other project and is to be returned upon request. Scales as stated herein are for reference only as normal reproduction processes may alter the accuracy of original drawings. Associated Space Design, Inc. 2018

NO. DATE: REMARKS:
REVISIONS:

DRAWING TITLE:
CONSTRUCTION PLANS
DECK LEVELS 1 & 2

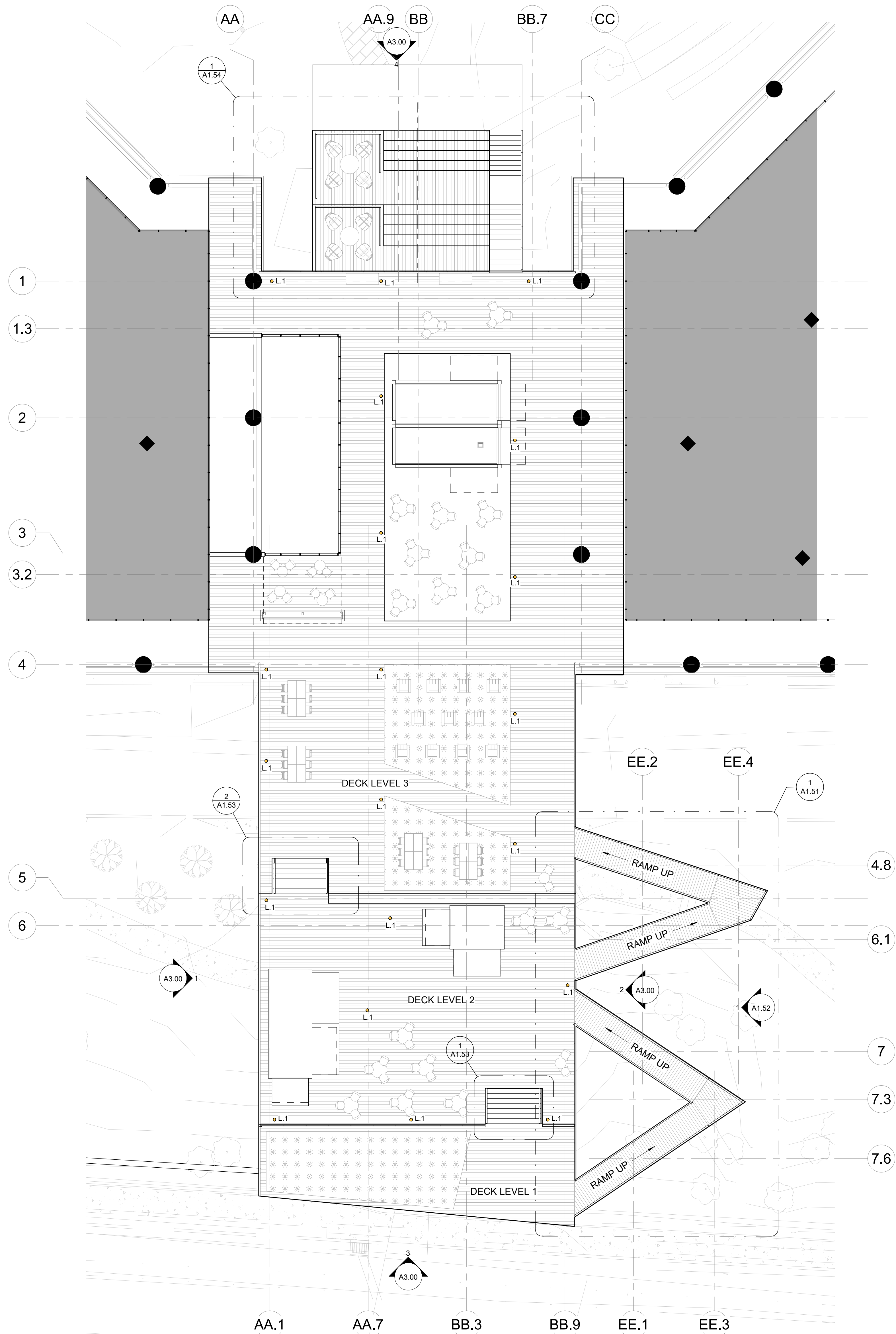
PROJECT NO.:
11381.00

ISSUE DATE:
DRAWN BY:
Author

CHECKED BY:
Checker

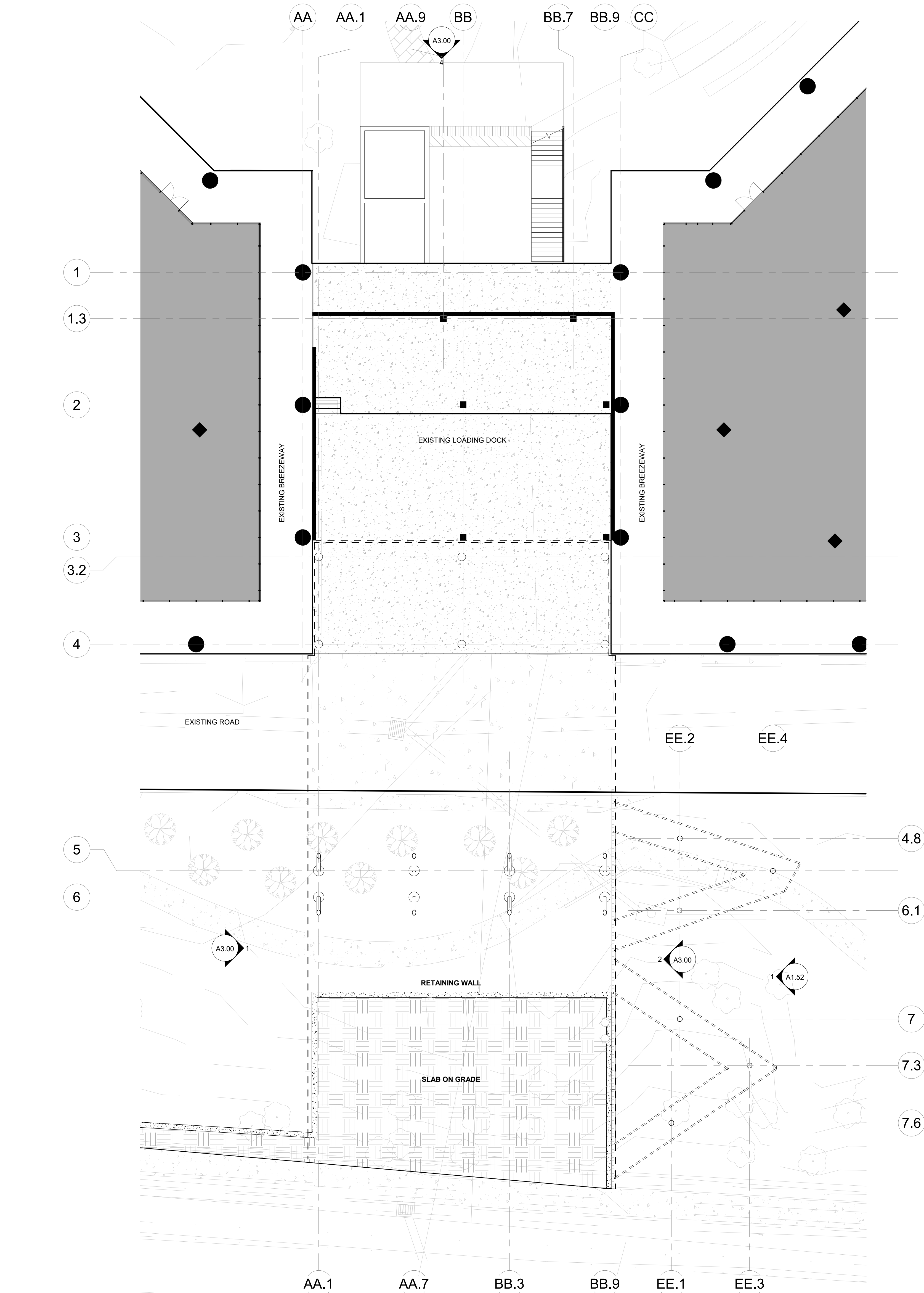
SHEET NUMBER:

A1.01



2 EXISTING LEVEL 2 / UPPER DECK PLAN

1" = 10'-0"



1 LOADING DOCK ENTRY PLAN - LEVEL 1

1" = 10'-0"

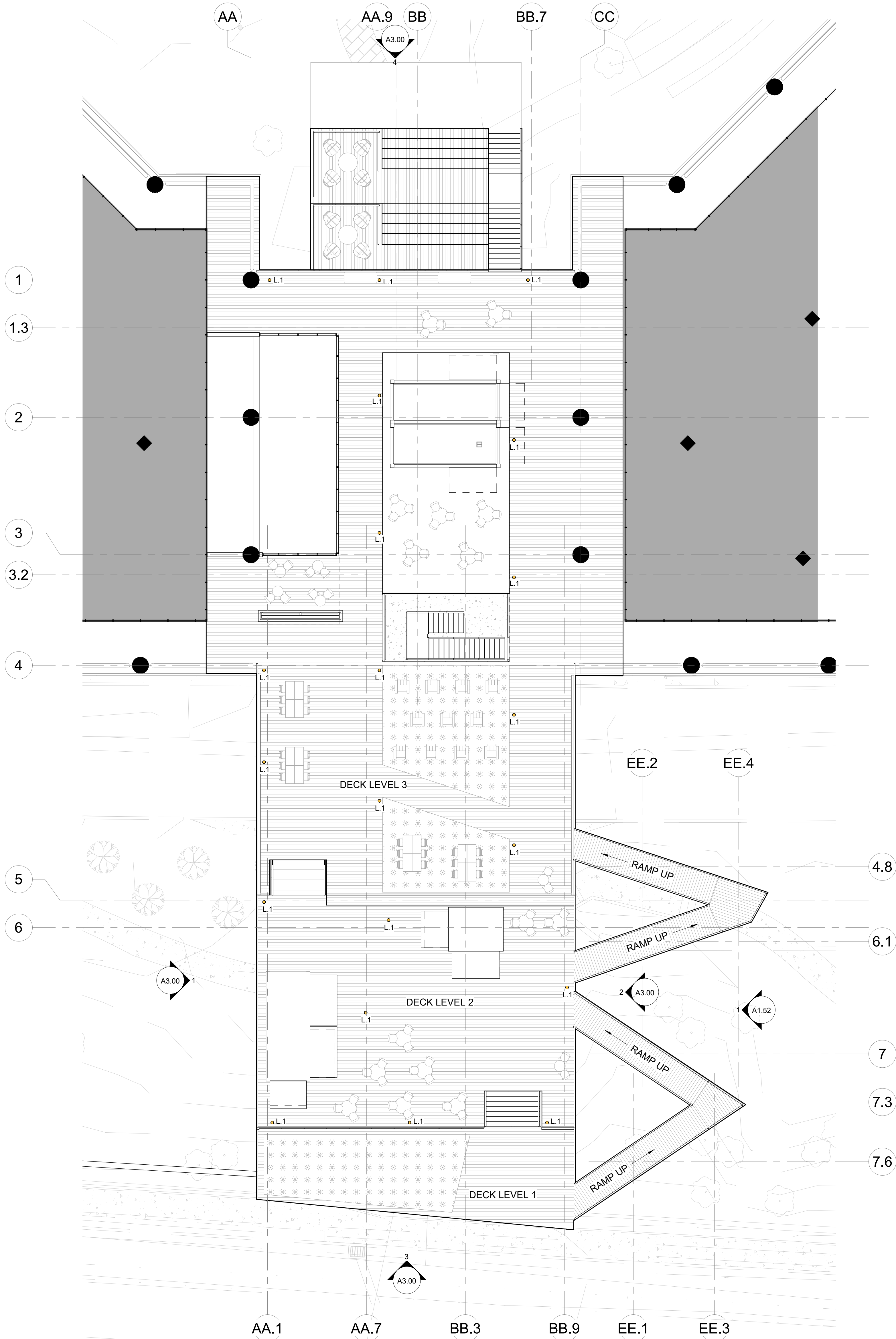
PIEDMONT
CENTER
AMENITY
BRIDGE

ATLANTA, GA 30305

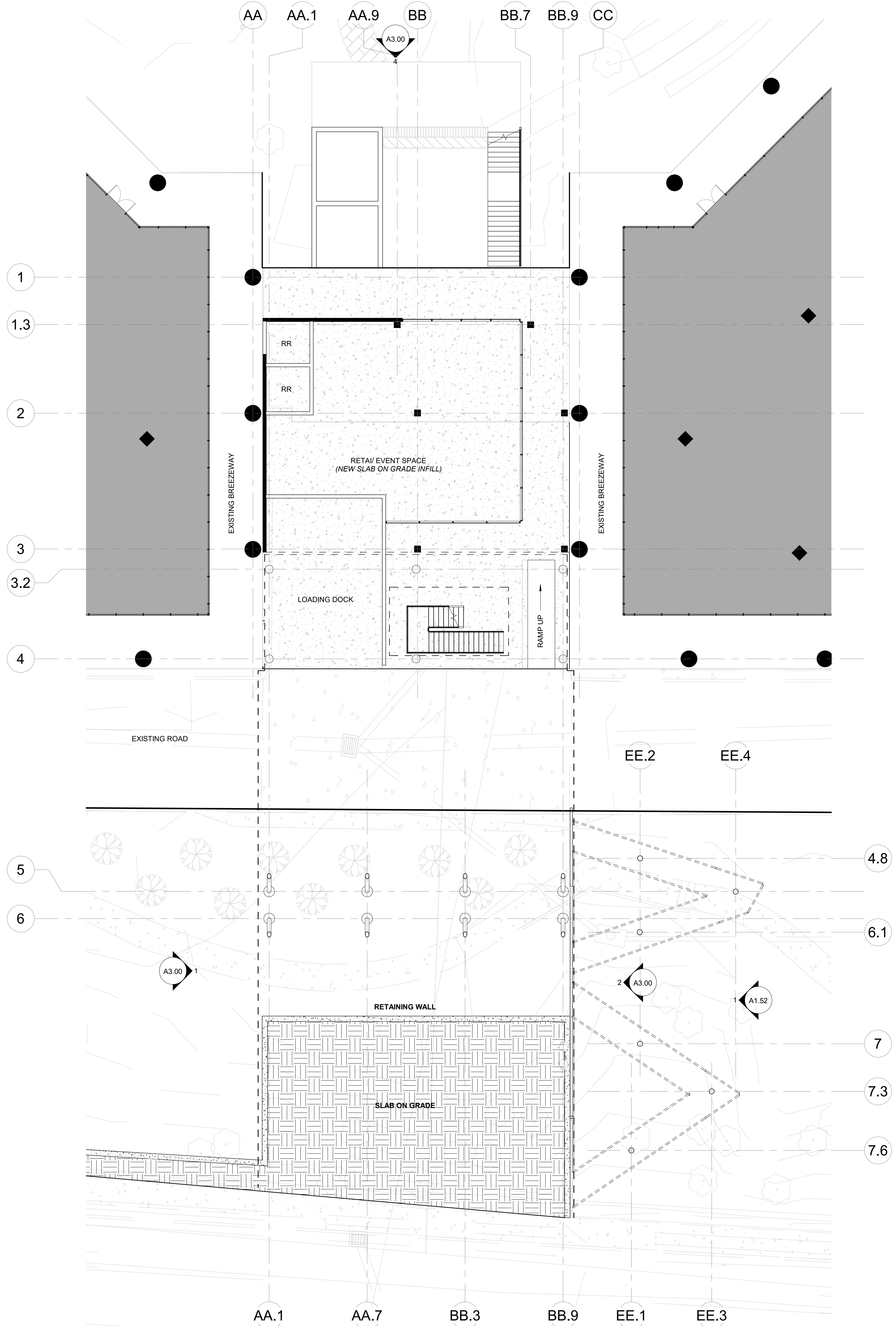
This drawing is the property of Associated Space Design, Inc. and is not to be reproduced or copied in whole or part. It is not to be used on any other project and is to be returned upon request. Scales as stated herein are for reference only as normal reproduction processes may alter the accuracy of original drawings.
Associated Space Design, Inc. 2018

NO.		DATE:	REMARKS:
REVISIONS:			
DRAWING TITLE:			
CONSTRUCTION PLANS (LOADING DOCK RETAIL OPTION)			
PROJECT NO:		ISSUE DATE:	
11381.00		05/07/21	
DRAWN BY:		CHECKED BY:	
Author		Checker	

A1.01 (ALT)



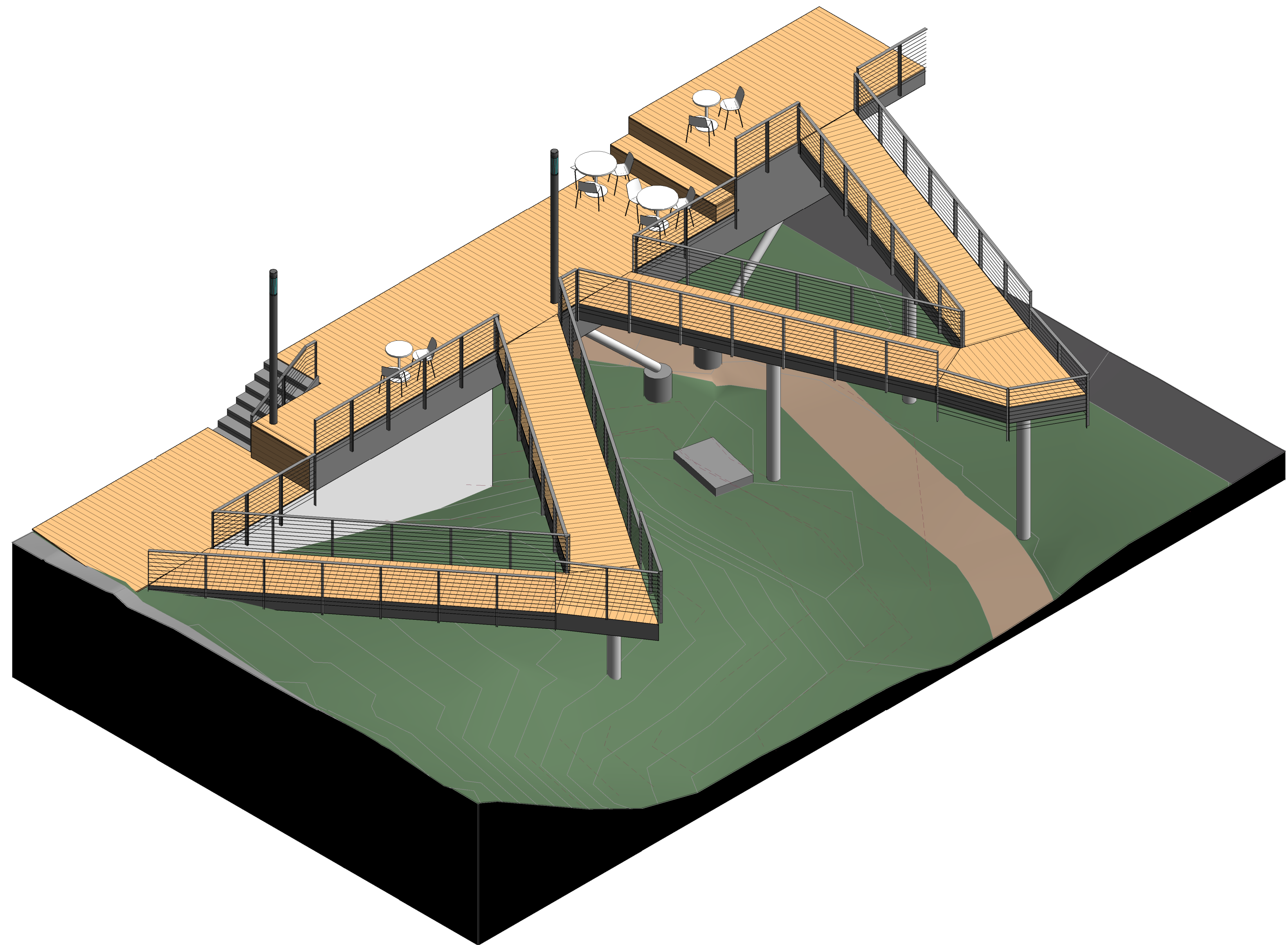
1 EXISTING LEVEL 2 / UPPER DECK PLAN (Retail Option)



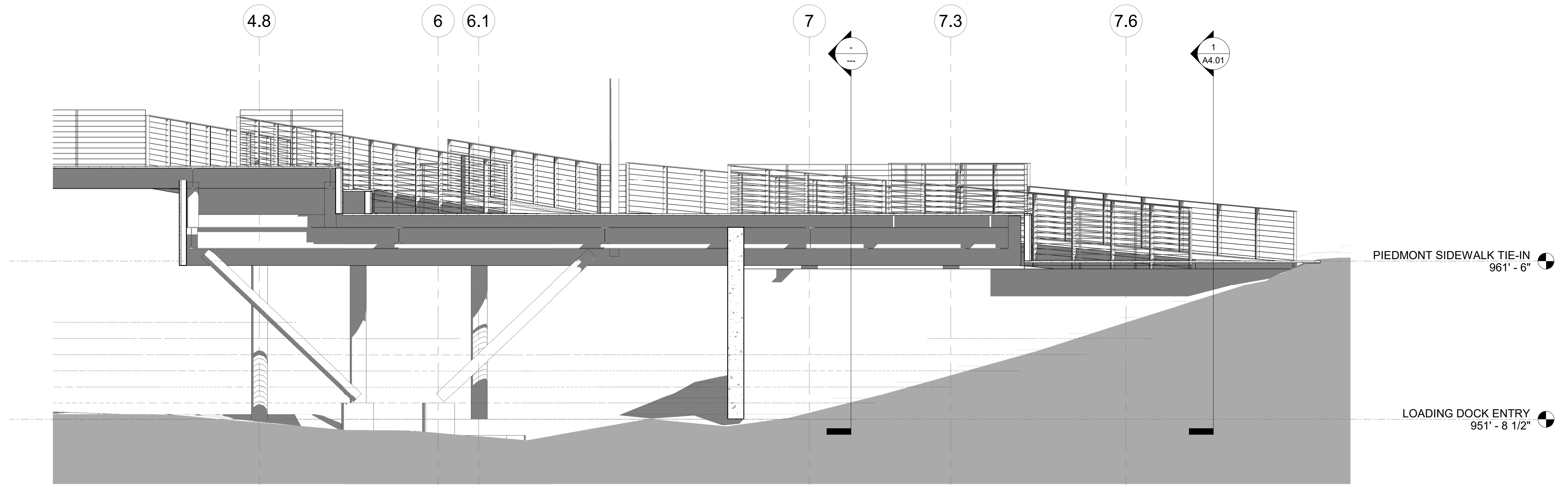
2 LOADING DOCK ENTRY PLAN - LEVEL 1 (Retail Option)

PIEDMONT
CENTER
AMENITY
BRIDGE

ATLANTA, GA 30305

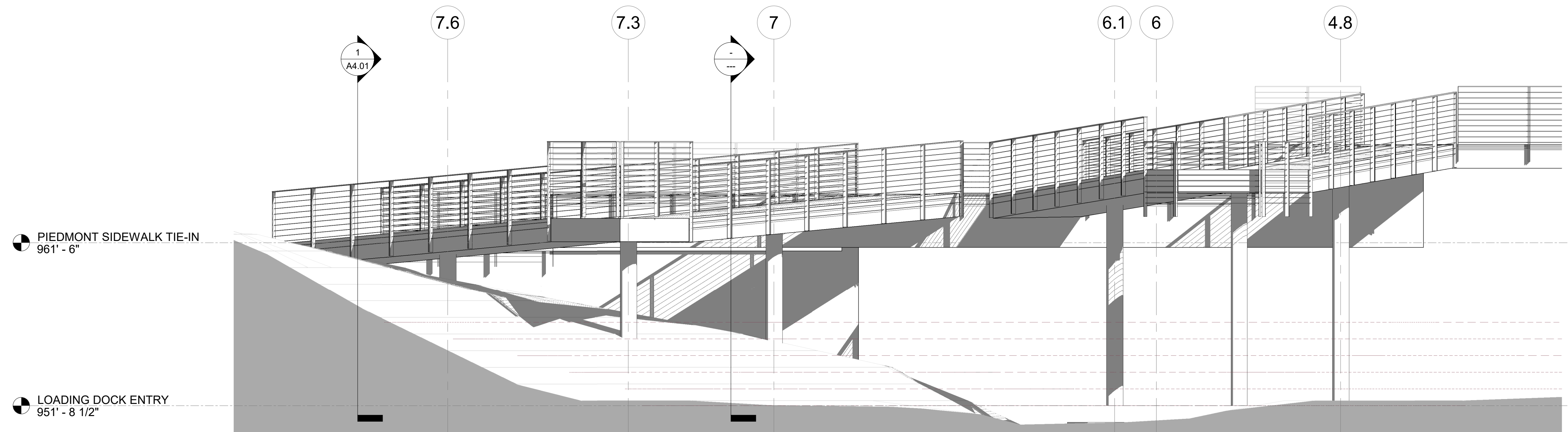


3 | 3D VIEW - SOUTHEAST RAMP - FOR REFERENCE ONLY



2 | Section 17

1/4" = 1'-0"



1	Elevation 1 - a
---	-----------------

$$1/4'' = 1'-0''$$

This drawing is the property of Associated Space Design, Inc. and is not to be reproduced or copied in whole or part. It is not to be used on any other project and is to be returned upon request. Scales as stated herein are for reference only as normal reproduction processes may alter the accuracy of original drawings.
Associated Space Design, Inc. 2018

[illegible]

NO: _____ DATE: _____ REMARKS: _____

REVISIONS: _____

ENLARGED RAMP ECTIONS & ELEVATIONS

PROJECT NO.:	ISSUE DATE:
11381.00	

OWN BY:	CHECKED BY:
Author	Checker

ET NUMBER:

A1.52

PIEDMONT
CENTER
AMENITY
BRIDGE

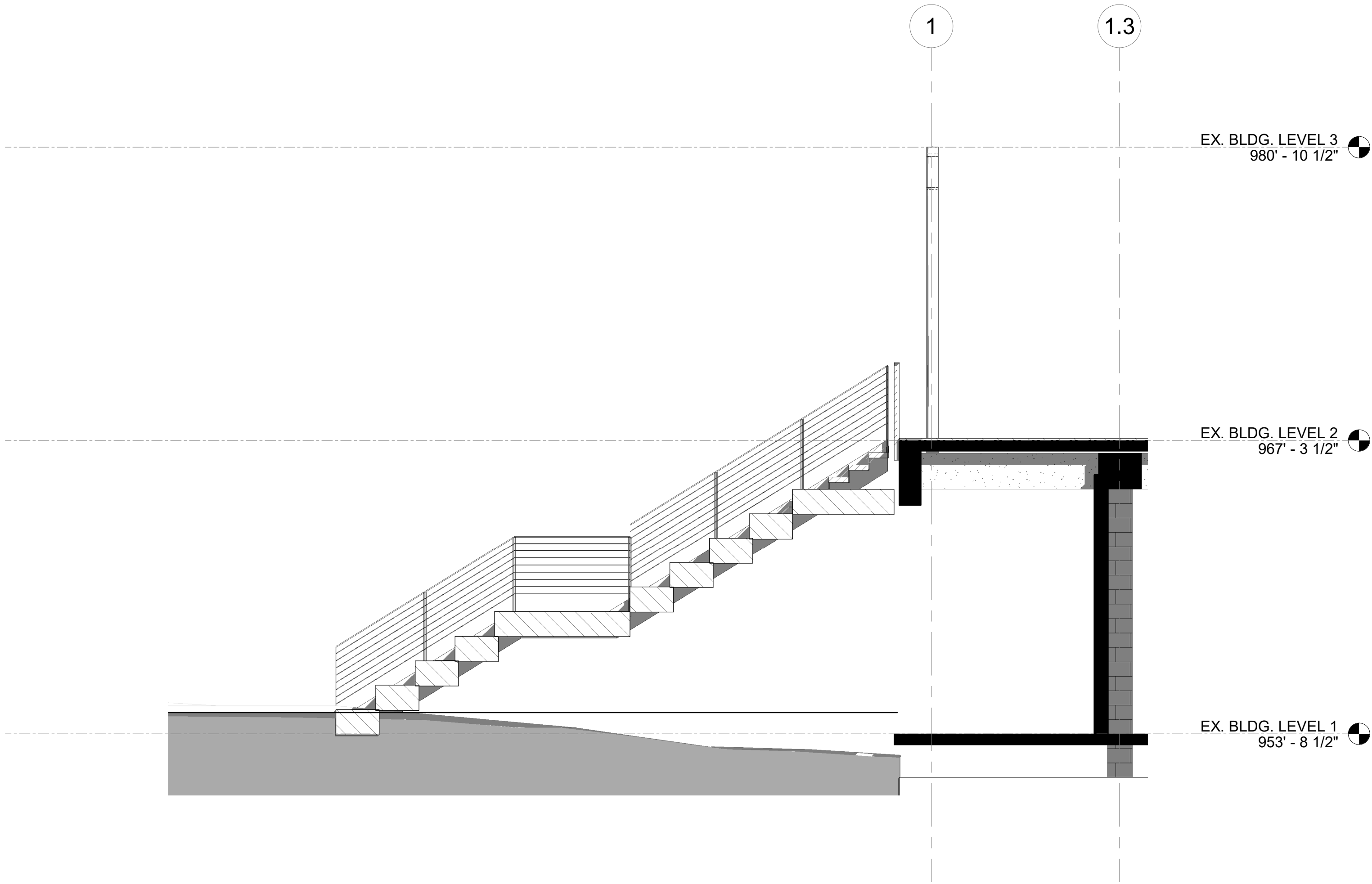
ATLANTA, GA 30305

This drawing is the property of Associated Space Design, Inc. and is not to be reproduced or copied in whole or part. It is not to be used on any other project and is to be returned upon request. Scales as stated herein are for reference only as normal reproduction processes may alter the accuracy of original drawings.
Associated Space Design, Inc. 2018

NO.		DATE:	REMARKS:
REVISIONS:			
DRAWING TITLE:			
ENLARGED TERRACE STAIR PLANS & SECTIONS			
PROJECT NO.:		ISSUE DATE:	
11381.00		04/27/21	
DRAWN BY:		CHECKED BY:	
Author		Checker	

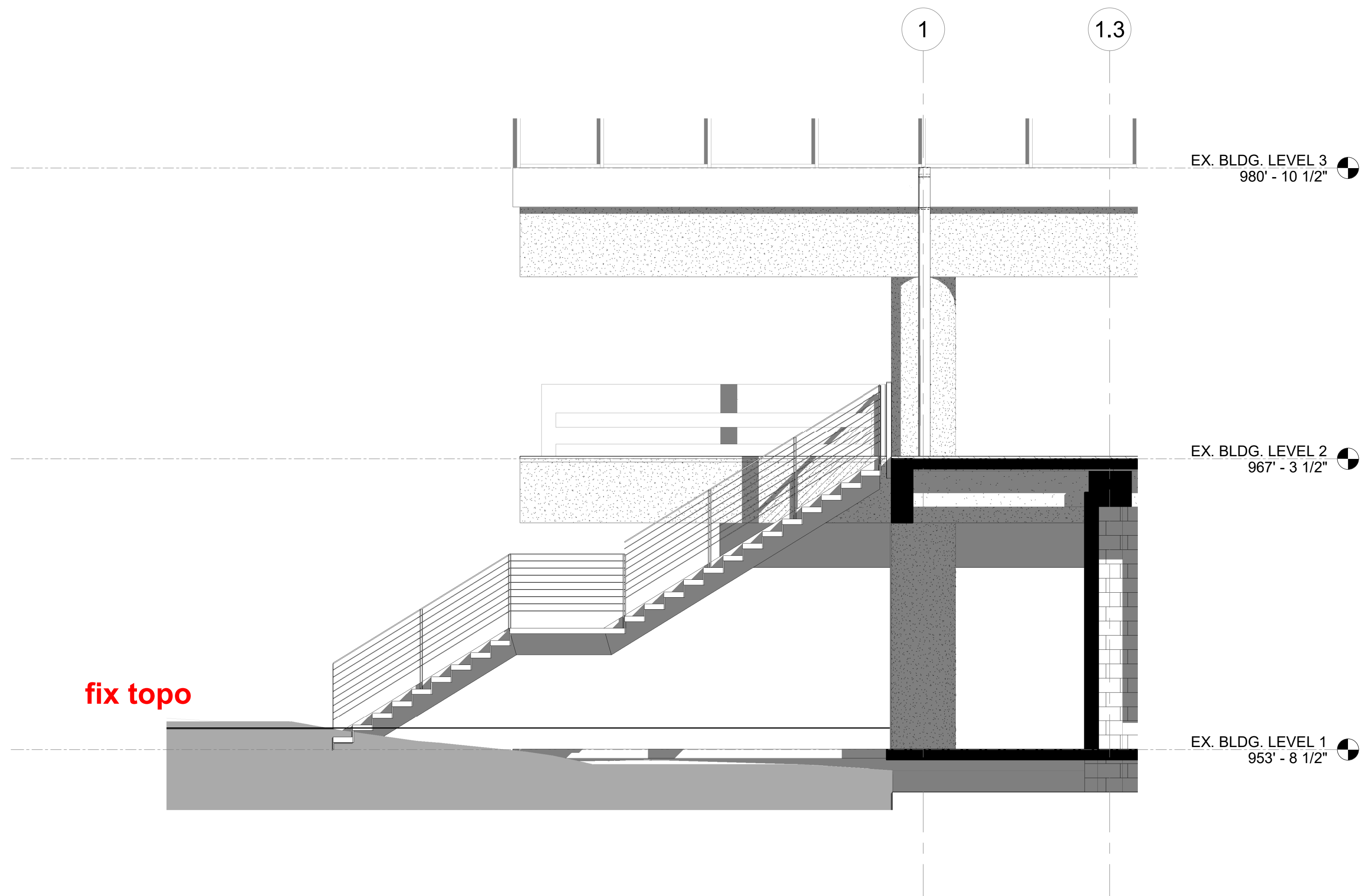
A1.54

5/7/2021 2:46:55 PM



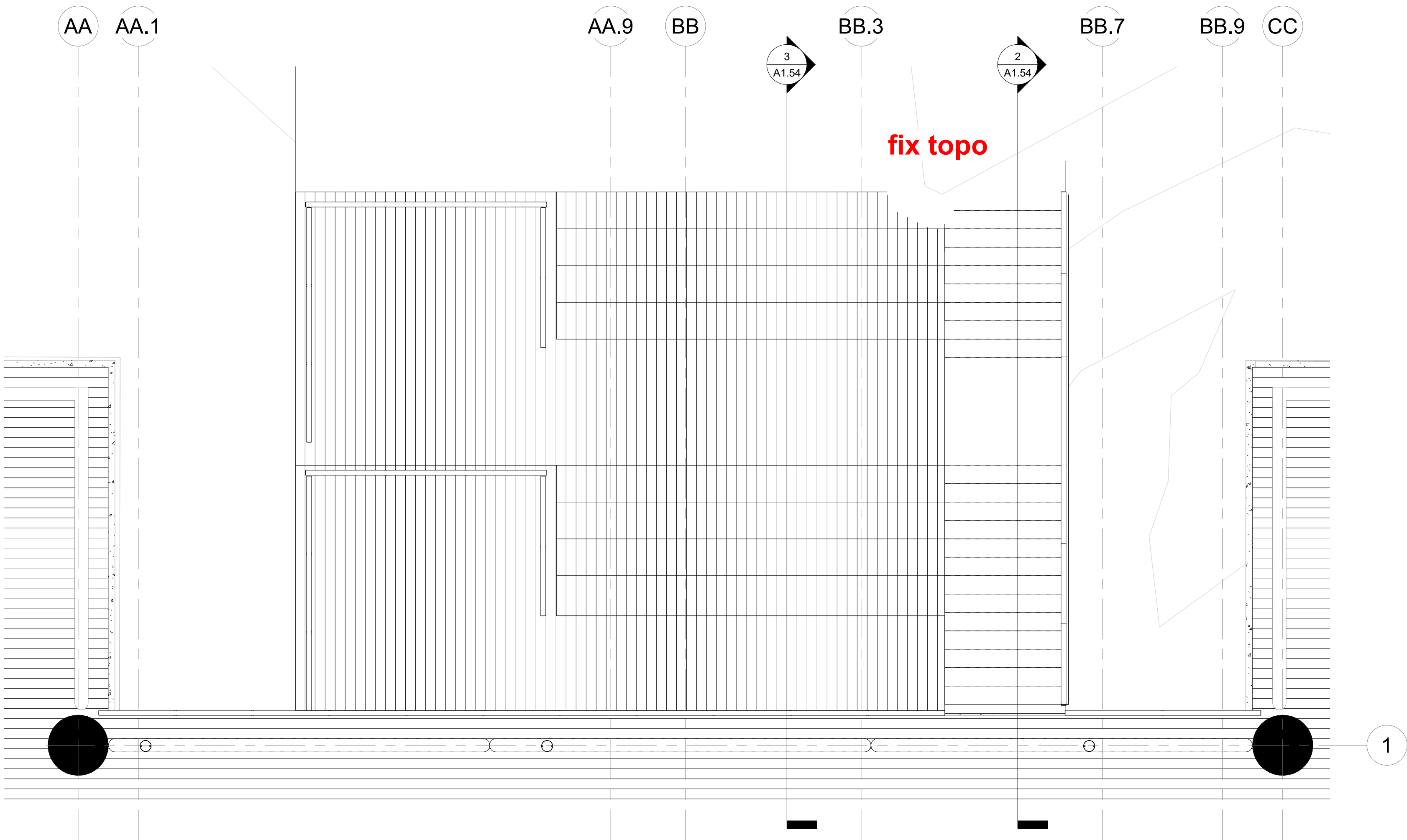
3 SECTION - TERRACE STAIR1

1/4" = 1'-0"



2 SECTION - TERRACE STAIR

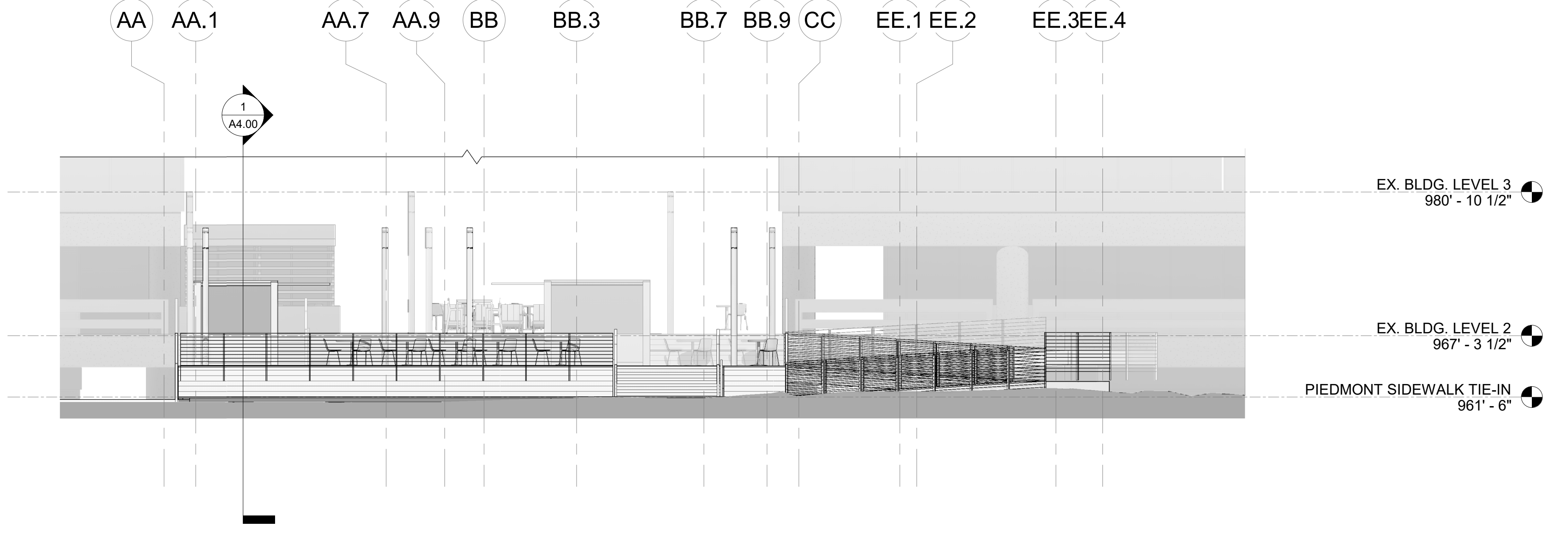
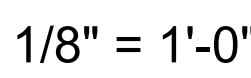
1/4" = 1'-0"



1 ENLARGED TERRACE STAIR PLAN - UPPER LEVEL

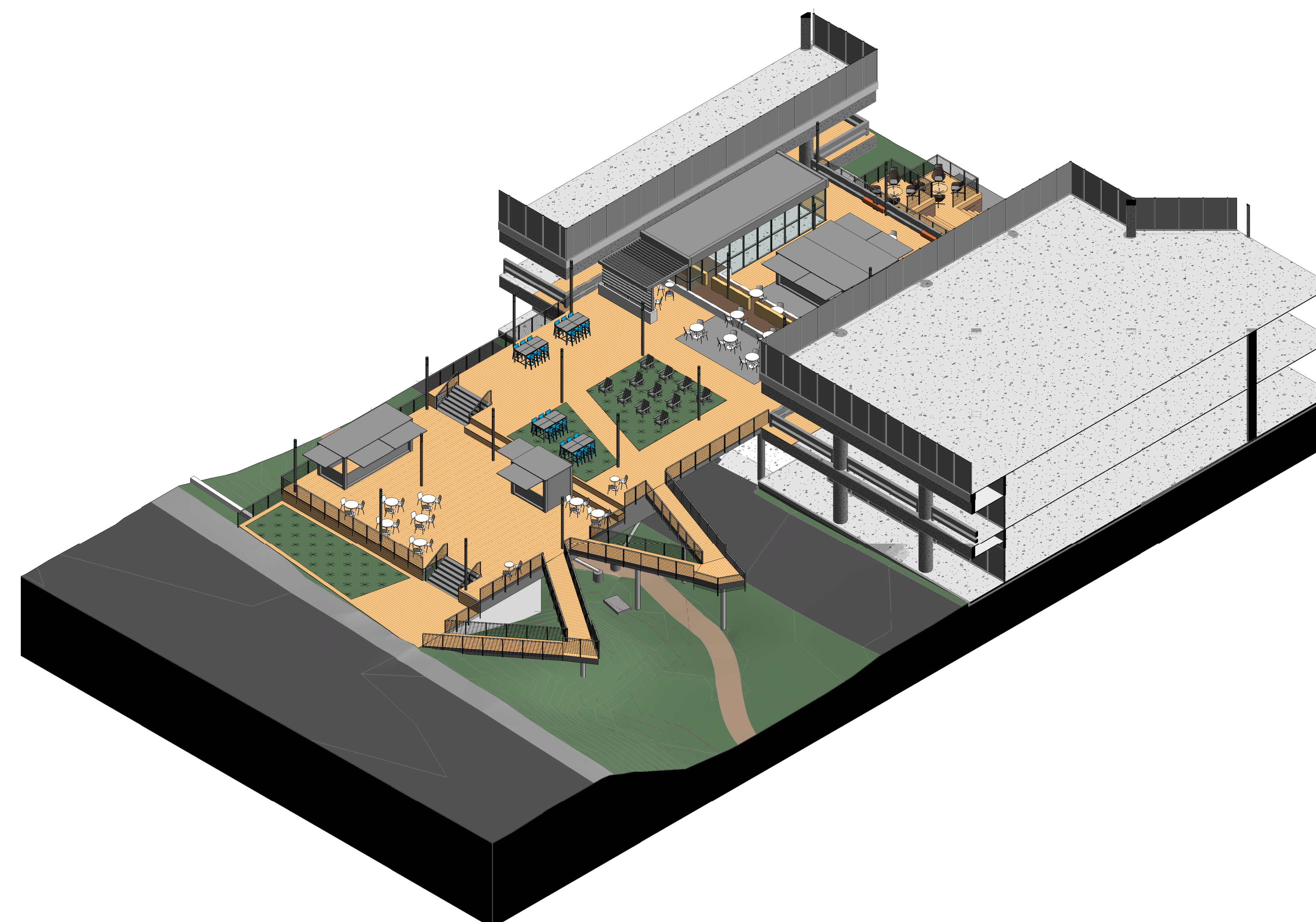
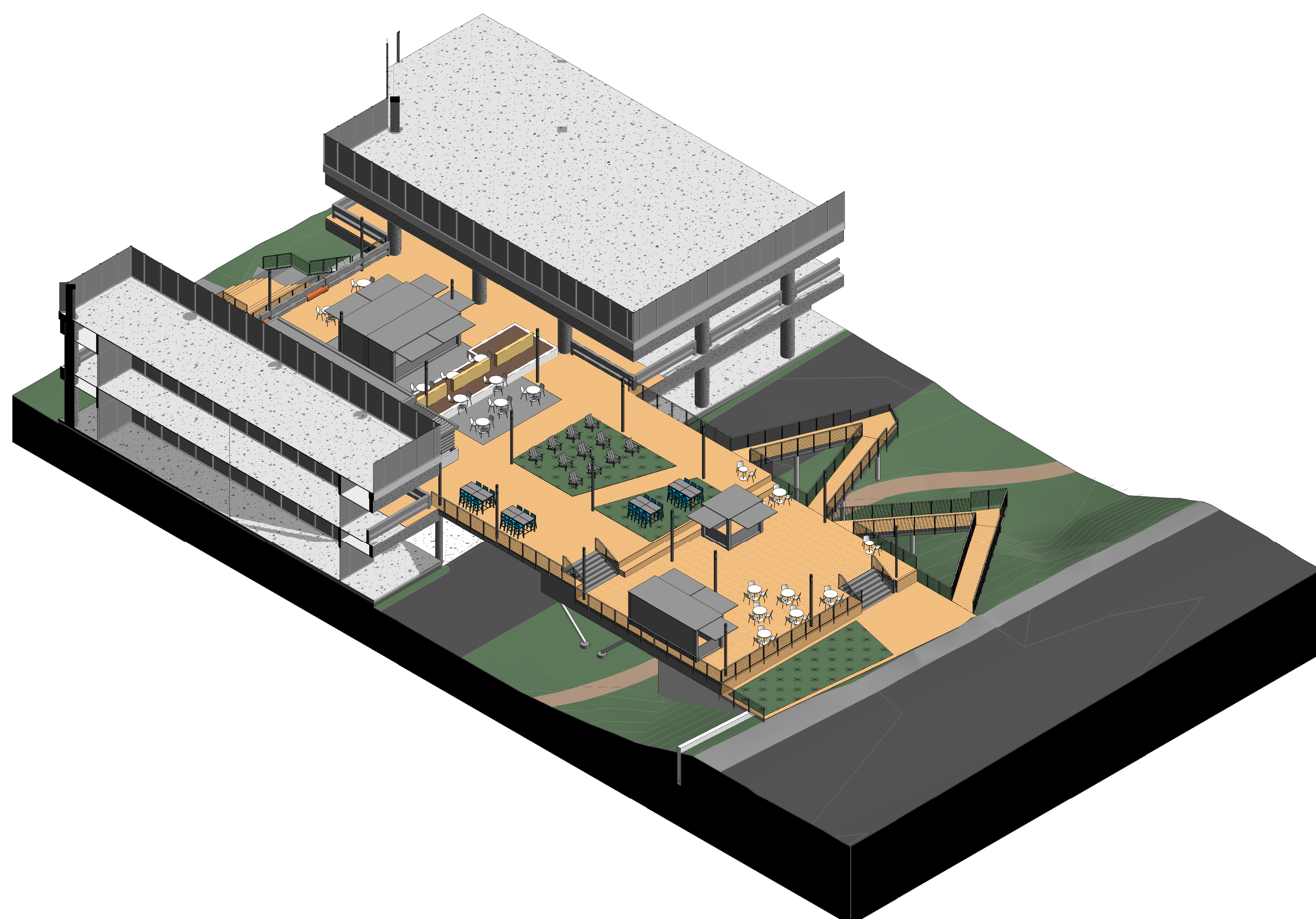
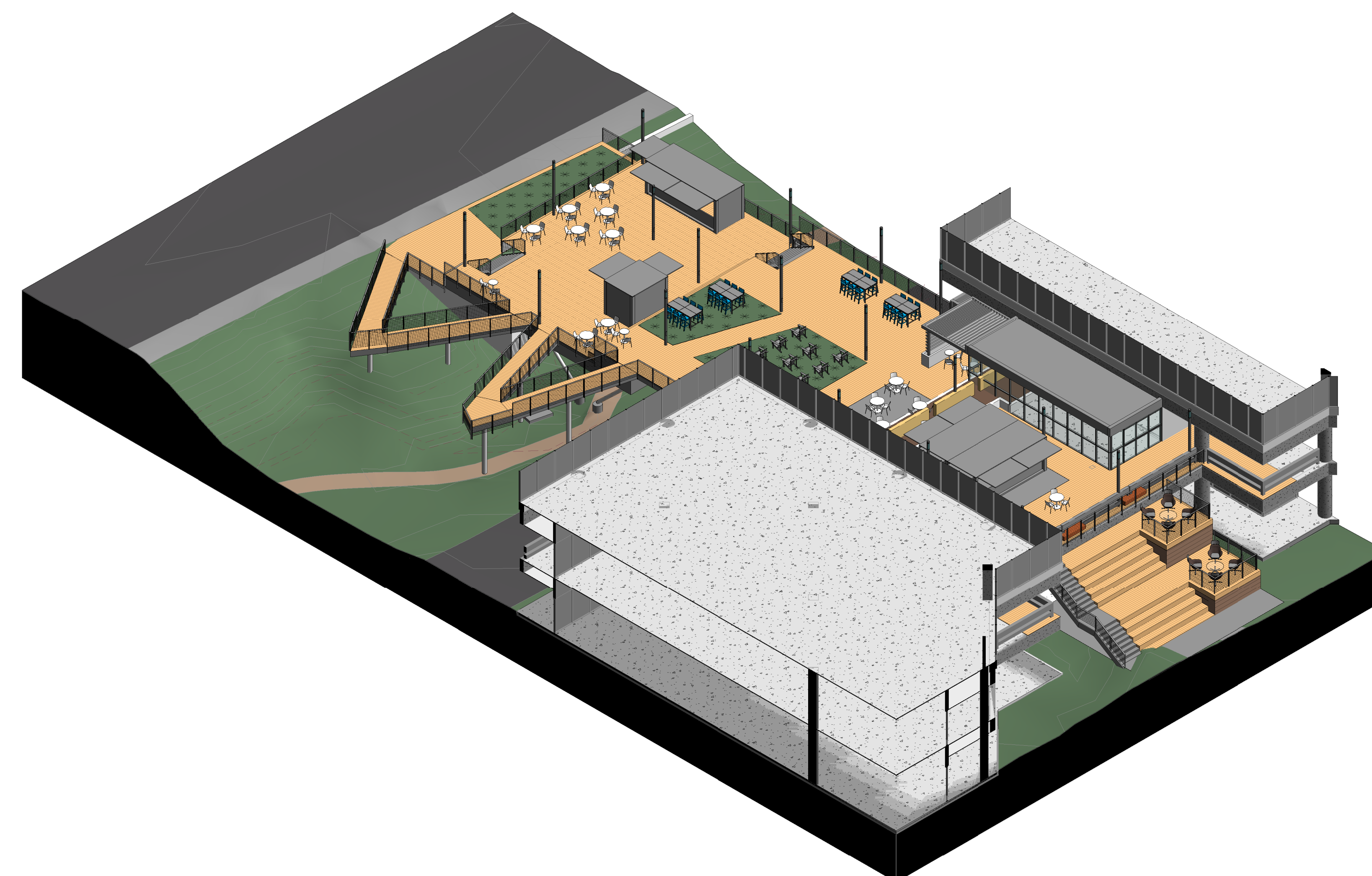
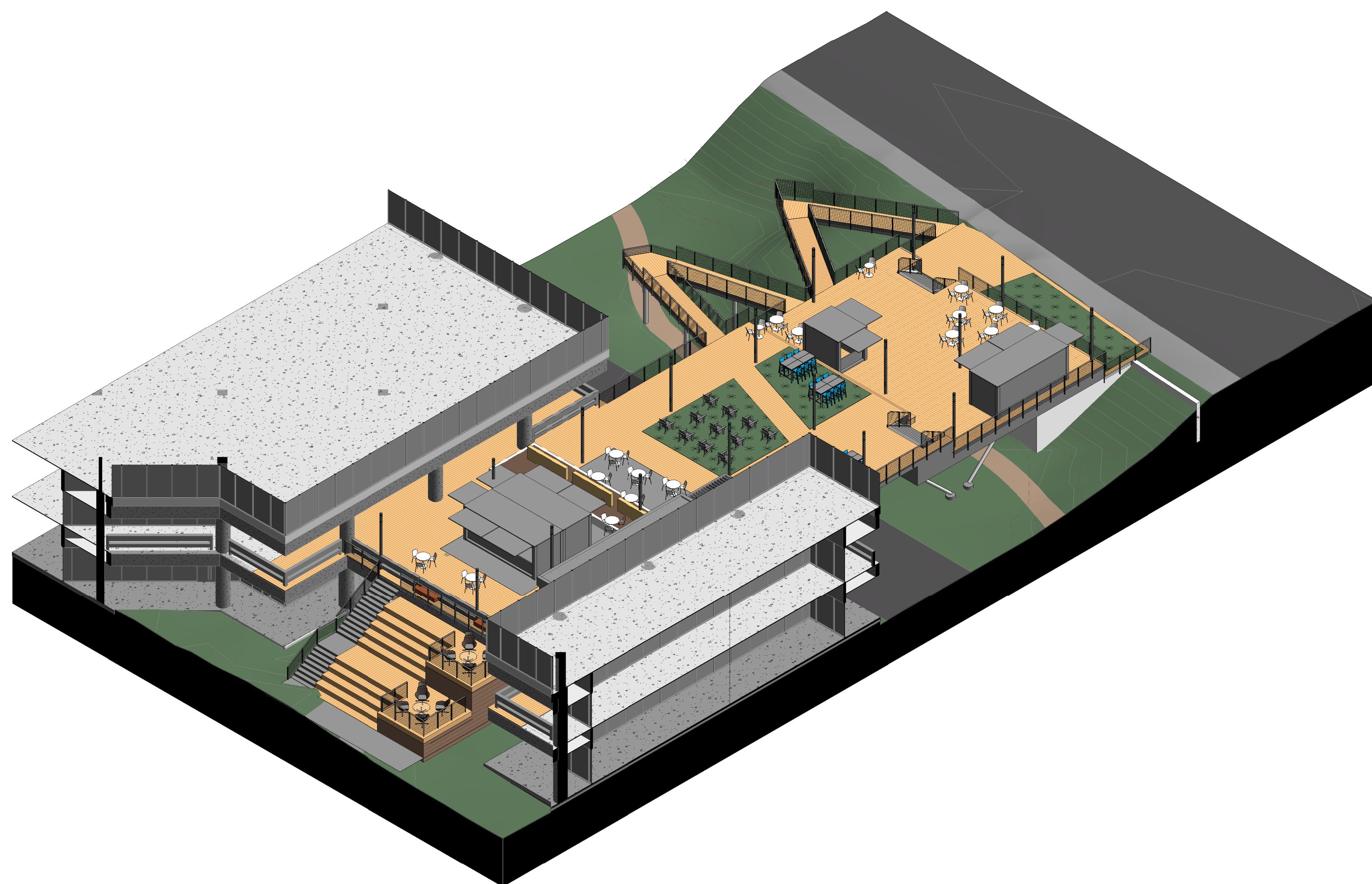
1/4" = 1'-0"

ATLANTA, GA 30305


$$1/8" = 1'-0"$$


NO:	DATE:	REMARKS:
REVISIONS:		
DRAWING TITLE:		
BUILDING ELEVATIONS		
PROJECT NO.:		ISSUE DATE:
11381.00		
DRAWN BY:		CHECKED BY:
Author		Checker

5/7/2021 2:47:22 PM



ASD | SKY

55 Ivan Allen Jr. Blvd.
Suite 100
Atlanta, GA 30308
T 404.688.3318
F 404.688.2255
www.asdsky.com

PIEDMONT
CENTER
AMENITY
BRIDGE

ATLANTA, GA 30305

This drawing is the property of Associated Space Design, Inc. and is not to be reproduced or copied in whole or part. It is not to be used on any other project and is to be returned upon request. Scales as stated herein are for reference only as normal reproduction processes may alter the accuracy of original drawings.
Associated Space Design, Inc. 2018

[illegible]

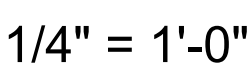
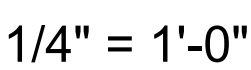
DRAWING TITLE:
**3D VIEWS - FOR
REFERENCE ONLY**

PROJECT NO.: 11381.00	ISSUE DATE:
DRAWN BY: Author	CHECKED BY: Checker

A3.01

5/7/2021 2:47:32 PM

ATLANTA, GA 30305



This drawing is the property of Associated Space Design, Inc. and is not to be reproduced or copied in whole or part. It is not to be used on any other project and is to be returned upon request. Scales as stated herein are for reference only as normal reproduction processes may alter the accuracy of original drawings.
Associated Space Design, Inc. 2018

[illegible]

NO:	DATE:	REMARKS:
REVISIONS:		

CROSS SECTIONS

PROJECT NO.:	ISSUE DATE:
11001-00	

OWN BY:	CHECKED BY:
---------	-------------

ET NUMBER:

A4.00

PIEDMONT
CENTER
AMENITY
BRIDGE

ATLANTA, GA 30305

This drawing is the property of Associated Space Design, Inc. and is not to be reproduced or copied in whole or part. It is not to be used on any other project and is to be returned upon request. Scales as stated herein are for reference only as normal reproduction processes may alter the accuracy of original drawings.
Associated Space Design, Inc. 2018

NO. DATE: REMARKS:
REVISIONS:

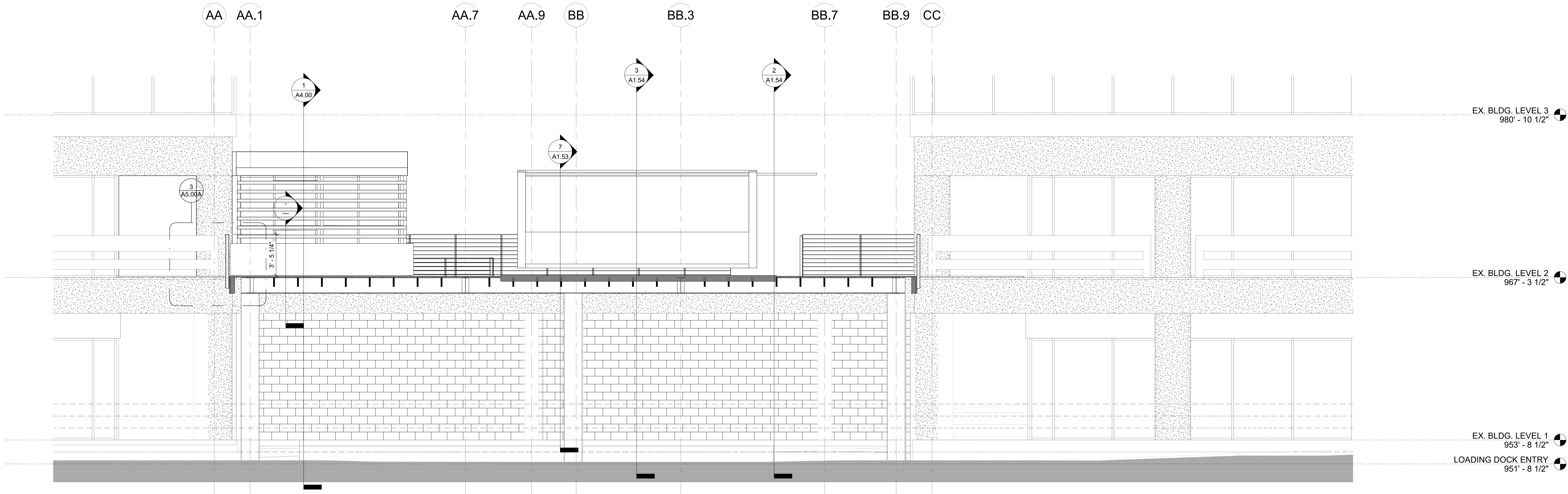
DRAWING TITLE:
CROSS SECTIONS

PROJECT NO.: 11381.00
ISSUE DATE:
DRAWN BY: Author
CHECKED BY: Checker

SHEET NUMBER:

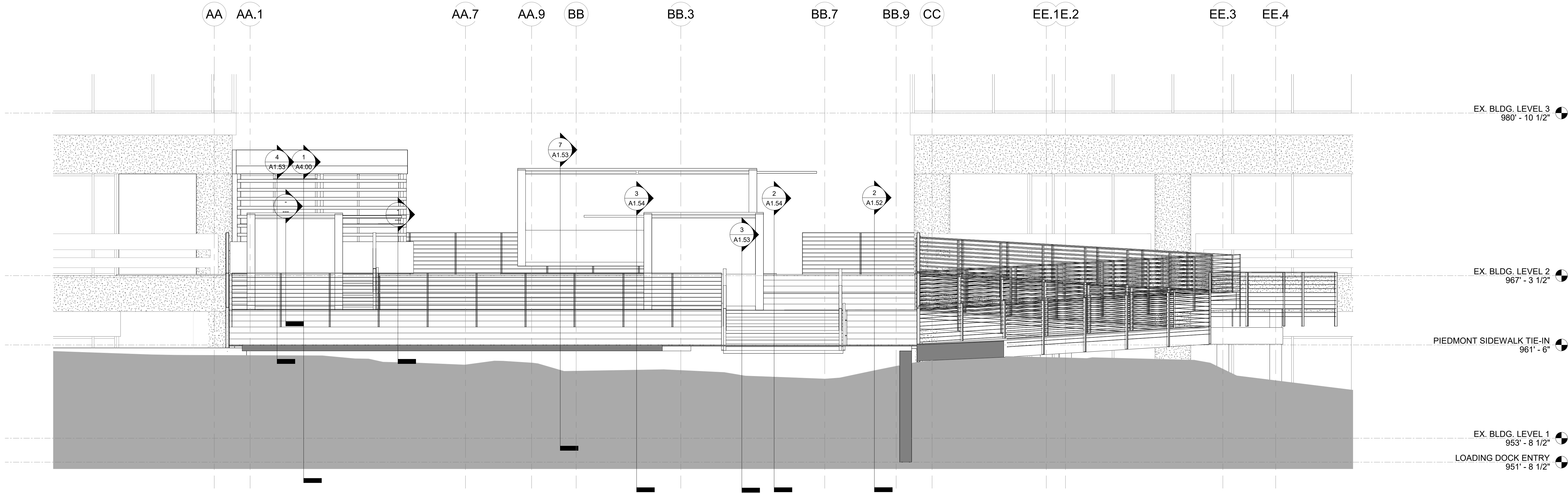
A4.01

5/7/2021 2:47:36 PM



2 CROSS SECTION 3

1/4" = 1'-0"

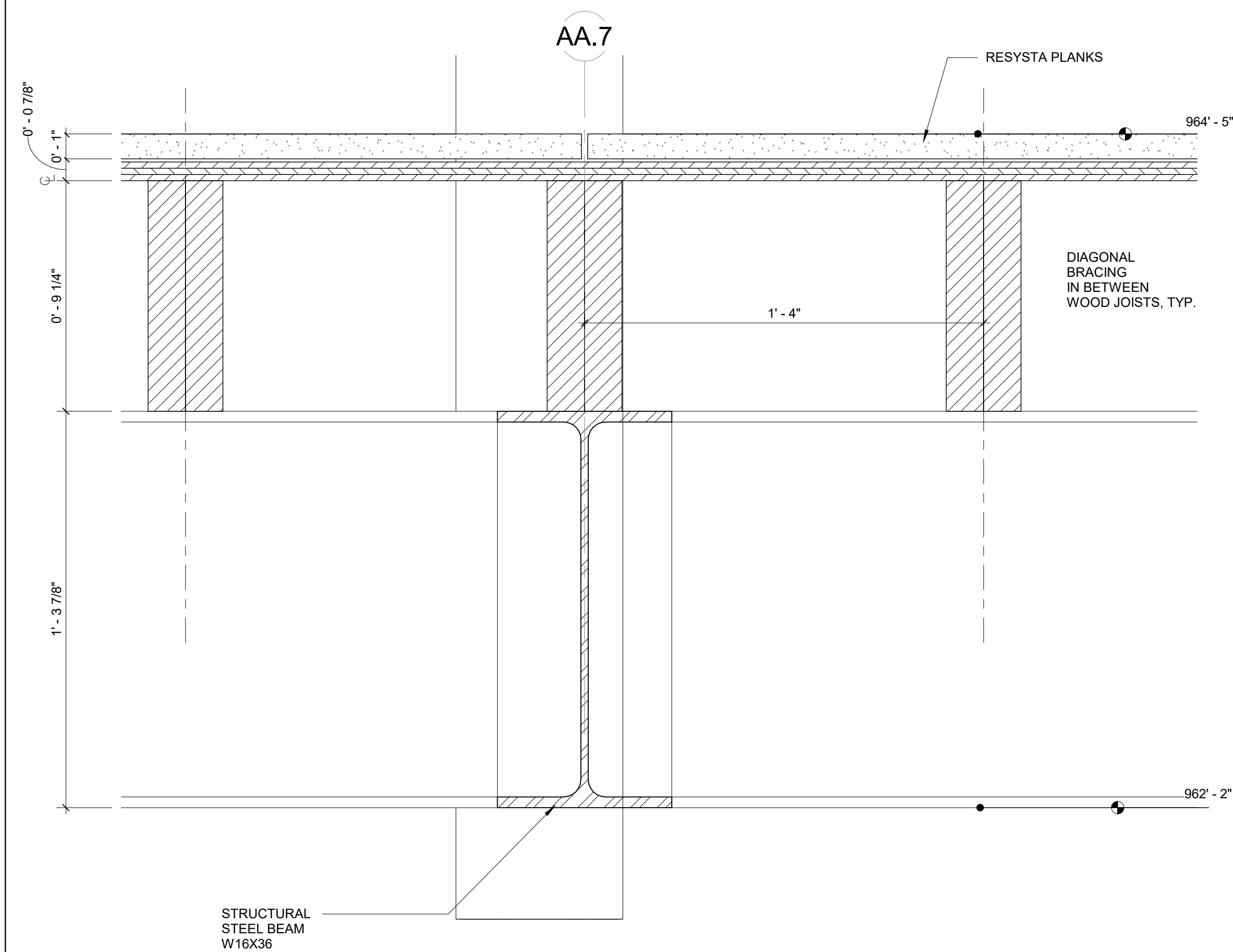


1 CROSS SECTION 2

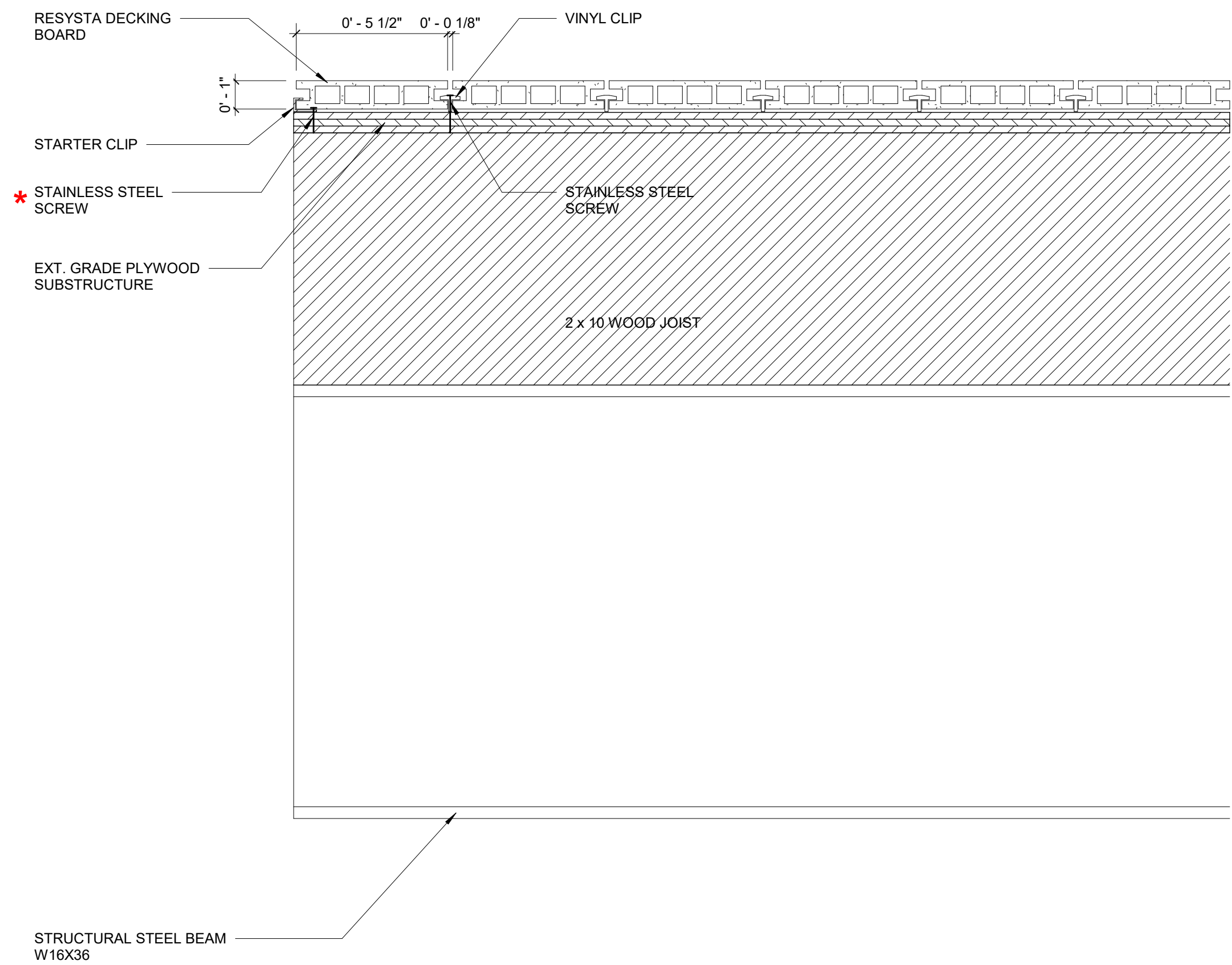
1/4" = 1'-0"

PIEDMONT
CENTER
AMENITY
BRIDGE

ATLANTA, GA 30305



2	RESYSTA SECTION - AT TREAD WIDTH
---	----------------------------------

$$3'' = 1'-0''$$


RESYSTA SECTION - AT TREAD DEPTH

$$3'' = 1'-0''$$

This drawing is the property of Associated Space Design, Inc. and is not to be reproduced or copied in whole or part. It is not to be used on any other project and is to be returned upon request. Scales as stated herein are for reference only as normal reproduction processes may alter the accuracy of original drawings.
Associated Space Design, Inc. 2018

[illegible]

NO: _____		DATE: _____		REMARKS: _____	
REVISIONS: _____					
DRAWING TITLE: COMPOSITE DECKING OPTION - DETAILS					
PROJECT NO.: 11381.00			ISSUE DATE: 04/23/21		
DRAWN BY: Author			CHECKED BY: Checker		

A5.00B