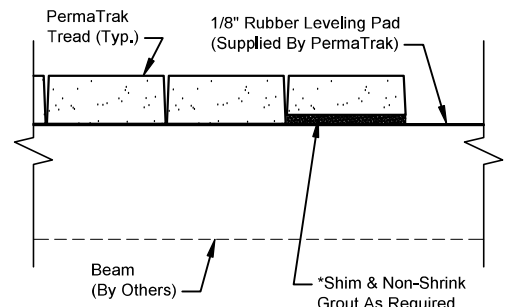
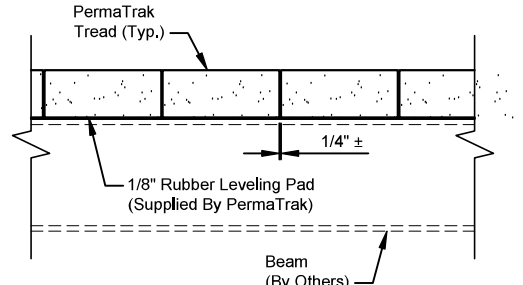


- 17 - 4" Thick x 1'- 6 1/2" Wide x 10'-5 1/2" Long
- 17 - 4" Thick x 1'- 6 1/2" Wide x 9'-9 1/4" Long
- 17 - 4" Thick x 1'- 6 1/2" Wide x 9'-9 1/8" Long
- 34 - 4" Thick x 1'- 6 1/2" Wide x 9'-8 3/4" Long
- 17 - 4" Thick x 1'- 6 1/2" Wide x 9'-8 7/8" Long
- Precast Concrete PermaTrak Treads
- Plus Joints @ 1/4"± Per Joint

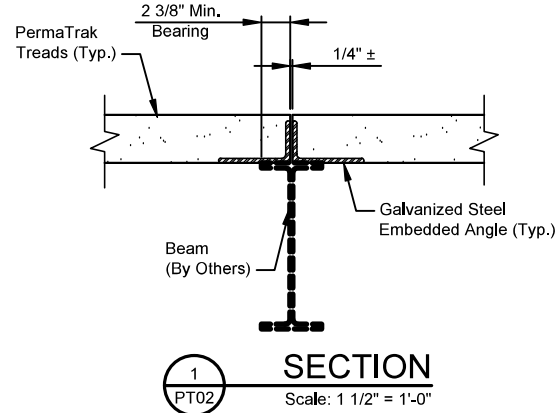


**\*Note:**  
Due to tolerances and variance in precast production and installation accuracy, shimming and grouting may be required. Where required the entire bearing area and void shall be shim and grouted with non-shrink grout.

**TYPICAL SHIM/GROUT DETAIL**  
Scale: Not To Scale (UNDER TREAD)



**TYPICAL TREAD SPACING DETAIL**  
Scale: Not To Scale



**28TH FLOOR SOUTH ROOF DECKING PLAN**  
Scale: 1/4" = 1'-0"

Patented Product: U.S. Patent #5,906,084 #8,302,362 #8,522,505 #8,839,588 #9,096,975

©2014 by PermaTrak® this drawing contains information that is proprietary to and property of PermaTrak® and shall be kept confidential. No duplication or distribution of this drawing may be made without the express written consent of PermaTrak® except for the limited purposes set forth in the contract between PermaTrak® and party for whom this drawing was made.

6			
5			
4			
3			
2			
1			
NO.	DATE	DESCRIPTION	BY:

PREPARED FOR:  
**BYUS STEEL, INC**

FOR CONSTRUCTION

**PermaTrak®**  
The Concrete Boardwalk Company

www.permatrak.com TEL: 877-332-7862

OFFICE LOCATIONS  
FLORIDA  
TEXAS  
LOUISIANA  
NORTH CAROLINA  
OHIO

PROJECT TITLE:  
**1 SOUTH WACKER**  
CHICAGO, IL

JOB NUMBER: 2019-1217
DATE: 02-25-2020
DESIGNED BY: KAS
DRAWN BY: MDH
CHECKED BY: KAS
SHEET NO. <b>PT02</b>